

Parts List

AMAZON

120 / 130 / 220

INDEX

PARTS HEADING	PAGE NO
Windscreen and Rear Windlow Rubbers AZ sedans & wagons	03
Door Seals and Door Components	03
Locks and Other Door Components	05
Door Window Guide Channels 2D – 1968	06
Door Window Guide Channels 2D – 1069-70	06
Door Windlow Guide Channel 4D & 220	06
Complete Sets of Door Rubbers & Guide Channels	07
INTERIOR PARTS	09
Amazon B16 1957-58	09
Amazon B16 1959-60 4-door	10
Amazon B16/B18 1960-61 4-door	10
Amazon B16/B18 1962-64 4-door	11
Amazon B18 1965-67 4-door	11
Amazon Estate 220 1962-64	12
Amazon Estate 220 1965-69	12
Amazon B18 1962-64 2-door	13
Amazon B18 1965-68 2-door	13
Amazon B20 1969-70 2-door	13
Rubber Mats	14
Firewall Carpet	14
Carpet Sets	14
Hood-Bonnet Rubber Parts	15
Lights	16
Horn Signal	17
Licence Light	17
Taillight Gaskets + Components	17
Bulbs	18
Engine Components	19
Fuel System	27
Heater System	29
Gear Box Parts	30
Instrument, Speedo Cables/Gear Box	32
Auto Transmission BW 35	32
Propeller Shaft	33
Front Suspension Bushings	34
Gas & Choke Linkage	42
Window Glass	43
Exhaust Systems (incl Installation Kits)	45
Mud Flaps, Brackets & Mounting Kits	48
Literature	48
Trim Mouldings	49
Emblem	49
Hydraulic Clutch Components	55
Mounting Kits	56
Decals	57
Figures	
Fig 1 : Amazon Interior	08
Fig 2 : Heater System	28
Fig 3 : Front Suspension Amazon	34
Fig 4 : Parts for Rear Axle Mountings	36
Fig 5 : Parts for Rear Axle Mountings Estate	38
Fig 6 : Parts for Rear Axle	40
Fig 7 : Sheet Metal Parts and Fenders Amazon	46

AMAZON

ALL PRICES IN Australian Dollars

Part no	Fig	WINDSHIELD AND REAR WINDOW RUBBERS AZ SEDANs & WAGONS			UNIT	Retail
673318	RS	Windshield rubber (With track for trim moulding)			each	128.91
660864	RS	Windshield rubber (for cars without chrome trims)			each	141.41
MSA21		Screw kit for inner moulding (windscreen)	chromed	st	18.07	
MSA21B		Screw kit for inner moulding (windscreen)	Black	st	18.07	
671764	RS	Rear window rubber (With track for trim moulding)	120/130	each	147.32	
660863	RS	Rear window rubber (for cars without chrome trims)		each	161.22	
672111/12	RS	Side window seal Amazon Favourite		pair	123.69	
662687	RS	Rear side window seal	220 / Wagon	pair	146.63	
HG25260		Window glas sealer	300 ml	each	23.63	
671687	RS	Trunk/boot seal Amazon		each	102.50	
292		Glue for B16 door and trunk/boot rubbers		each	35.79	
AZ WAGON TAILGATE						
672248	RS	Rubber seal, in body opening	220	each	146.63	
672247	RS	Rubber seal, in body for upper hatch	220	each	62.54	
671866	RS	Rubber seal set (lower on hatch / sides of tailgate)	220	each	66.36	
667048	RS	Rubber seal, tailgate bottom	220	each	32.31	
662645		Metal rail for rubber seal	220	meter	18.07	
670449		Gas-operated tailgate servo	220	each	225.85	
668916/17	R	Rubber base, body half of hatch hinge	220	LH/RH	each	19.80
668918	R	Rubber base, hatch half of hatch hinge	220	2/car	each	15.98
670988	RS	Rear window seal (With track for trim molding)	220		each	125.43
662655	RS	Rear window seal (for cars w/o chrome trims)	220		each	100.07
DOOR SEALS AND DOOR COMPONENTS						
672154/55	RS	Door rubber seal (Front doors all models + rear doors on 4d)		LH/RH	pair	164.69
672148/49	RS	Door rubber seal, 220 rear doors	220	LH/RH	each	101.11
662706	RS	Door rubber seal, AZ B16 4-door (glues on to door)	4D	ca 15m/car	meter	14.25
673457/58	RS	Rubber seal, front door vent window		LH/RH	each	119.87
654562	R	Rubber block (triangular) in vent window opening		2/bil	each	22.24
191644	RS	Rivet vent.window - frame		4+4/car	each	1.48
17455	RS	Rivet vent.window hinge		2/car	each	5.21
120151	RS	Washer for rivet (stainless)		2/car	each	1.04
672481		Lock button black	ch 225050-	2/car	each	7.30
672480	N	Catch	ch 225050-	2/car	each	10.42
662689	RS	Rubber seal, fixed rear door window	220		each	71.58
661810		Rubber seal, rear door vent window	4D / 220	LH/RH	each	169.91
690587	RS	Windlace, includes plastic seal (black fabric)	2D	2/car	each	87.56
690588	RS	Windlace, includes plastic seal (black fabric)	4D	2/car	each	107.36
690589	RS	Windlace, includes plastic seal (black fabric)	220	2/car	each	110.84
690588G	RS	Windlace, includes plastic seal (grey fabric)	4D	2/car	each	107.36
92509	RS	1:26 B-pillar rubber seal	4D/220	4/car	each	21.89
13319	RS	Rubber seal, vent window inside	1 (2") needed		pair	1.04

653726		Elevator channel front door		2/car	each	114.66
653742		Elevator channel rear door		2/car	each	114.66
320551		Filler strip for elevator channel front and rear doors			pair	21.54
82429		Rubber stop (round) for 653726	early model	2/car	each	4.69
656577		Rubber stop (rectangular) for 653726	later model	2/car	each	3.82
92590		Cap for elevator chain		2/car	each	8.69
950020/955946		Screw & washer for 95290		2+2/car	each	0.83
658520	N	Pulley front door - lower	B16	4D	each	27.80
653739/41	N	Pulley rear door	upper/lower	2/car	each	27.80
654015/16	N	Door lock rear door		LH/RH	each	88.60
192458		Mounting clips upper door trim	-1969	26/car	each	2.43
659654	RS	Rivet for clip 192458	-1969	26/car	each	0.52
679885	RS	Mounting clips upper door trim	1969-70	26/car	each	1.04
659996		Mounting clips upper door trim	4 doors	12/car	each	7.30
Door hinge front door						
653787		Door hinge, door half	front door	4/car	each	62.89
671732		Door hinge, body half	front door	4/car	each	64.97
671730		Door hinge pin	front door	4/car	each	23.97
950158		Screw door hinge to door	front door	8/car	each	2.43
955524		Screw door hinge to body	front door	8/car	each	1.04
18895		Washer for 950158	front door	8+12/car	each	1.74
955949		Lock washer for 955524	front door	16/car	each	0.35
661640		Door stop	front door	2/car	each	34.05
950045		Screw for door stop	front door	8/car	each	1.04
192287-940155		Washer & lock washer for screw 950045	front door	8+8/car	each	0.28
654056	N	Door stop/spring early mod with one hole	front door	2/car	each	34.75
955523		Screw for 654056	front door	4/car	each	1.04
955921		Washer for screw 955523	front door	4/car	each	0.35
Door hinge rear door						
653792/93	N	Door hinge, door half	rear door	LH/RH	each	62.54
653794	N	Door hinge, body half	rear door	4/car	each	62.54
653795		Door hinge pin	rear door	4/car	each	11.12
950158		Screw door hinge to body	rear door	12/car	each	2.43
18895		Washer for 950158	rear door	8+12/car	each	1.74
654057	N	Door stop/spring early mod with one hole	rear door	2/car	each	34.05
662036	N	Door stop/spring later mod with two hole	rear door	2/car	each	34.05
955523		Screw for 654057 & 662036	rear door	4/car	each	1.04
955921		Washer for screw 955523	rear door	4/car	each	0.35
661640		Door stop	rear door	2/car	each	34.05
950045		Screw for door stop	rear door	8/car	each	1.04
192287-940155		Washer & lock washer for screw 950045	rear door	8+8/car	each	0.28

LOCKS AND OTHER DOOR COMPONENTS						
655800		Lock cylinder, left door (w/ 2 keys)		Left	each	82.35
655802		Lock cylinder, right door (w/ 2 keys)		Right	each	82.35
666229		Lock cylinder trunk	120/130		each	76.79
669366S		Lock cylinder wagon tailgate (incl.gasket & coil)	220		each	95.20
663804		Lock cylinder set (L/R doors & trunk)	120/130		set	199.79
669367S		Lock cylinder set (L/R doors & tailgate)	0 - WAGON		set	224.80
662271		Striker plate trunk on upper hatch	220		each	134.12
662285		Striker plate trunk on lower hatch	220		each	87.91
662720	RS	Lock pin for door handle	220	1/car	each	10.08
673261		Ignition lock with 2 keys "Neiman"	Neiman		each	145.58
673339		Key blank for ignition	Neiman		each	13.55
660140		Key blank for ignition	ASSA	"VOLVO"	each	49.69
660140-1	RS	Key blank for ignition	ASSA		each	13.20
680196		Key blank for ignition	Neiman	B20	each	19.11
671319		Key blank	FS	round head	each	10.08
660137		Key blank	FP		each	20.85
660138		Key blank	FR		each	10.08
662721	RS	Gasket locksleeve rear hatch	220	1/car	each	5.56
663749	RS	Gasket upper tailgate handle 220	AZ 220	2/car	each	3.82
660147S	RS	Gasket kit door handles (ch# <304969)	B16/B18	1 kit / car	set	18.07
673682S	RS	Gasket kit door handles (ch# >304970)	B18/B20	1 kit / car	set	18.07
666424	R	Lock button door (black)			each	9.38
673277/78		Guide on striker plate		LH/RH	each	23.28
654169		Washer (black plastic) door handle and crank -1964	Front/rear	4/car	each	9.03
670664		Washer (black plastic) door handle and crank 1965-70	Front/rear	4/car	each	6.25
654168		Omega clip inner door/window crank	2 & 4D	2/car	each	1.04
659949		Spring for inner door/window crank	2 & 4D	4/car	each	11.12
294	R	Special tool for Omega clip removal			each	23.28
658383		Door jamb switch			each	38.91
276613		Rear view mirror (screw mounted)	72-73	2/car	each	182.41
276614		Rear view mirror (stud mounted)	68-71	2/car	each	173.73
1213608		Mirror head 276613/14	68-73	2/car	each	102.50

DOOR WINDOW GUIDE CHANNELS 2D -1968						
655182	R	Upper channel with chromed edge	S	2/car	pair	53.51
654029	R	Rear channel with chromed edge	S	2/car	pair	31.97
653998	R	Front channel	S	2/car	pair	53.51
663610F	R	Rear lower channel	S	2/car	pair	26.41
655195	R	Inner window scraper list with chromed edge	S	2/car	pair	41.69
670810	RS	Outer window rubber scraper strip	S	2/car	pair	39.61
500	R	Complete set of glass run channels -1969		1set/car	set	206.74
DOOR WINDOW GUIDE CHANNELS 2D 1969-70						
673848	R	Upper & rear channel without chrome	S	2/car	pair	47.25
673851	R	Front channel	S	2/car	pair	32.66
655195	R	Inner window scraper list with chromed edge	S	2/car	pair	41.69
663610F	R	Rear lower channel	S	2/car	pair	26.41
670810	RS	Outer window rubber scraper strip	S	2/car	pair	39.61
501	R	Complete set of glass run channels 1969-70		1set/car	set	161.22
663610/11	RS	Metal rail for guide channel 2-door	2D	LH/RH	each	57.33
DOOR WINDOW GUIDE CHANNEL 4D&220						
FRONT DOOR						
653997	R	Upper channel with chromed edge	S	2/car	pair	43.08
654029	R	Rear channel with chrome	S	2/car	pair	31.97
653998	R	Front channel	S	2/car	pair	53.51
663610F	RS	Rear lower channel	S	2/car	pair	26.41
653996	R	Inner window scraper list with chrome	S	2/car	pair	41.69
502	R	Complete set of glass run channels front 4d/220		1set/car	set	160.18
653999	N	Clamp for guide channels front & rear	10+14/car		each	2.43
653766/67	RS	Metal rail for guide channel front door	4D & 220	LH/RH	each	57.33
654566/67	RS	Metal rail for guide channel rear door	4D & 220	LH/RH	each	57.33
657994	RS	Outer window rubber scraper strip	4D & 220	4/car	set	62.54
REAR DOOR						
653997	R	Upper channel with chrome	S	2/car	pair	43.08
653896	R	Front channel with chrome	S	2/car	pair	64.63
654565	R	Rear channel without chrome	S	2/car	pair	29.88
653996	R	Inner window scraper list with chrome	S	2/car	pair	41.69
663610F	RS	Rear lower channel	S	2/car	pair	26.41
503	R	Complete set of glass run channels rear 4d/220		1set/car	set	166.08
504	R	Complete set front/rear doors. (502+503)		1set/car	set	313.06

COMPLETE SETS OF DOOR RUBBERS & GUIDE CHANNELS						
Kit of rubbers & guide channels for AZ 2d -1968 2D						
505	R	Including black windlace for two doors	1set/car	set	448.22	
505-1	R	Excluding black windlace	1set/car	set	346.41	
Kit of rubbers & guide channels for AZ 2d 1969-70 2D						
506	R	Including black windlace for two doors	1set/car	set	399.57	
506-1	R	Excluding black windlace	1set/car	set	298.81	
505/506 contains:						
→ Door rubbers (672154/55)			1 pair			
→ Guide channel set (500 or 501)			1 set			
→ Rubber seal vent window inside (13319)			1 pair			
→ Door opening windlace (690587)			1 pair			
→ Door edge reflex sticker (125)			1 pair			
PLEASE STATE YEAR MODEL AT TIME OF ORDER						
Kit of rubbers & guide channels for AZ 4d / 220						
507/507-2	R	Including black windlace for four doors	1set/car	set	762.66	
507-1/507-3	R	Excluding black windlace	1set/car	set	678.23	
507 contains:						
672154 / 55	1:12	→ Front door rubbers (672154/55)	1 pair			
672148 / 49		→ Rear door rubbers (672154/55 or 672148/49)	1 pair			
504		→ Guide channel set (504)	1 set			
13319		→ Rubber seal vent window inside (13319)	1 set			
690588 / 89		→ Door opening windlace (690589)	1 pair			
125		→ Door edge reflex sticker (125)	4 pc			
92509		→ B-pillar rubber seal (92509)	4 pc			
PLEASE STATE CAR MODEL AT TIME OF ORDER						
Luggage compartment						
667812		Rubber bottom for tunk	2/car		each	4.52
656656		Hinge	2/car	B18	each	107.36
Screws and washer in stock please ask						
659315/16	RS	1:18 Straps for jack			pair	16.33
654691/92	RS	1:22 Set of spare wheel straps AZ std	Short/long	-1968	set	35.79
669143	RS	1:22 Set of spare wheel straps AZ 220			set	35.79
660677	R	1:21 Trunk rubber mat 120/130		1957-70	each	579.90
660677T	RS	1:21 Trunk carpet textile 120/130	3 Pieces	1957-70	each	191.10

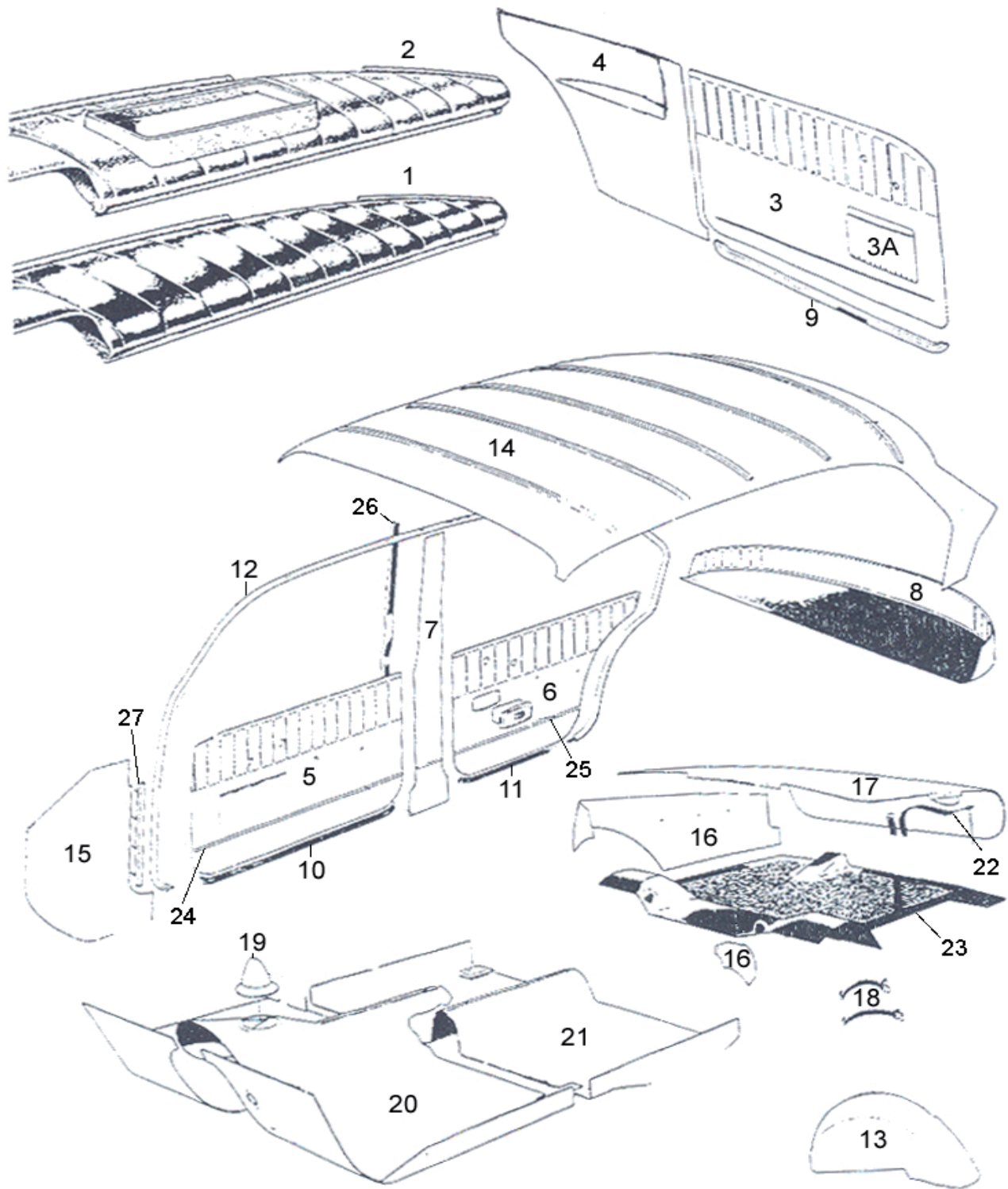


Fig 1: Amazon interior

INTERIOR PARTS

Correct reproductions of the original.

All materials special ordered. Correct appearance in color, grain and printing. Panels and seat upholsteries are heat embossed as original, chrome trims welded in to panels. All door panels are ready to install.

All upholstery, headliners, carpets and panels are made by VP Autoparts AB in Fristad, Sweden

1:14 Headliners					
98391	RS	Grey felt fabric (with plastic seal)	2&4d	each	422.16
98391-1	RS	Grey felt fabric (without plastic seal)	2&4d	each	590.67
98569	RS	Textured fabric	2&4d	each	592.41
98747	RS	Perforated vinyl	2&4d	each	356.14
690639	RS	Perforated vinyl	220	each	375.95
MS30		Screw kit for sun visor bracket		chromed	each 4.17
61544		Washer for sun visor	2/car	each	1.91
907824		Split pin for sun visor	2/car	each	0.43
667878	RS	1:8 Panel under rear window (white/black cardboard)	1957-64 + 67-70	each	146.63
691615	RS	1:8 Panel under rear window (embossed vinyl)	White 1965-68	each	150.45
691615S	RS	1:8 Panel under rear window (embossed vinyl)	Black 1965-68	each	150.45
691616	RS	1:8 Carpet under rear window (hat shelf)	1965-68	each	107.36

(667878 NEEDS TO BE PAINTED WHITE, OR UPHOLSTERED WITH HEADLINER MATERIAL)

AMAZON B16 1957-58

These interiors come with welded prints on panels and seat covers.

The original "V" in the upper part of the rear seat is not forgotten...

FOLLOWING PARTS AVAILABLE

RS	1:5	→ Front door panels with masonite/textile/vinyl	pair	501.03
RS	1:6	→ Rear door panels with masonite/textile/vinyl	pair	501.03
RS		→ Front seat upholstery (lower/upper)	2 pairs	1106.30
RS		→ Rear seat upholstery (lower/upper)	pair	712.28
RS	1:13	→ Wheel arch upholstery	pair	100.07
RS	1:7	→ B-pillar panel	pair	97.98
6-110		Blue fabric w/ silver threads. Beige / black vinyl		
7-107	RS	Red fabric w/ silver threads. Beige / black vinyl	1957-58	
8-108	RS	Grey / black fabric. Beige / black vinyl	1957-58	
9-109	RS	Material in stock, but reference for pattern needed	1957-58	

AMAZON B16 1959-60 4-door
FOLLOWING PARTS AVAILABLE

RS	1:5	→ Front door panels with masonite/textile/vinyl	pair	501.03
RS	1:6	→ Rear door panels with masonite/textile/vinyl	pair	501.03
RS		→ Front seat upholstery (lower/upper)	2 pairs	1122.97
RS		→ Rear seat upholstery (lower/upper)	pair	664.33
RS	1:13	→ Wheel arch upholstery	pair	100.07
98108 RS	1:7	→ B-pillar panel	pair	97.98
655261 R	1:24	Chrome strip door panel front door	each	80.61
655262 R	1:25	Chrome strip door panel rear door	each	70.53

INTERIOR CODES AVAILABLE
*** = No rear seat arm rest**

12-110		Blue fabric w/ silver threads. Beige / black vinyl
13-111	*	Grey / black fabric. Beige / black vinyl
14-112		Light grey fabric. Beige vinyl
15-113		Red leather. Red vinyl
16-116	*	Turquoise / beige vinyl
17-115	*	Red / beige vinyl
18-114		Turquoise fabric. Beige vinyl
117-20		Light brown vinyl.
118-19	*	Beige / grey-beige vinyl

AMAZON B16/B18 1960-61 4-door
FOLLOWING INTERIOR PARTS AVAILABLE

RS	1:5	→ Front door panels with masonite/textile/vinyl	pair	501.03
RS	1:6	→ Rear door panels with masonite/textile/vinyl	pair	402.35
RS		→ Front seat upholstery (lower/upper)	pair	994.41
RS		→ Rear seat upholstery (lower/upper)	pair	587.20
RS	1:7	→ B-pillar panel	pair	996.50
			pair	37.53

New seat frames, both front and rear. No embossings.
US model seat upholstery made all out of vinyl. ("PIP")
European models have fabric in seat upholstery.
Door panels come with pocket and a 3-field vinyl pattern

INTERIOR CODES AVAILABLE

119-160	Light brown vinyl	rence needed	US
120-161	Blue vinyl		US
121-162	Grey-beige vinyl	rence needed	US
122-163	Light brown vinyl. Gold-brown fabric.		European
123-164	Blue fabric. Blue vinyl.		European
124-165	Grey-beige vinyl. Grey fabric		European
125-183	Red leather. Red vinyl		European
129-178	Light brown vinyl	rence needed	US - bench seat
130-179	Blue vinyl	rence needed	US - bench seat
131-180	Grey-beige vinyl	rence needed	US - bench seat

AMAZON B16/B18 1962-64 4-door

FOLLOWING INTERIOR PARTS AVAILABLE

1:5	→ Front door panels with masonite/textile/vinyl		pair	501.03
1:6	→ Rear door panels with masonite/textile/vinyl		pair	402.35
	→ Front seat upholstery (lower/upper)	European	pair	996.50
	→ Rear seat upholstery (lower/upper)	European	pair	587.20
1:7	→ B-pillar panel		pair	210.56
	→ Front seat upholstery (lower/upper)	US	pair	1071.55
	→ Rear seat upholstery (lower/upper)	US	pair	1038.19
1:7	→ B-pillar upholstery		pair	37.53

INTERIOR CODES AVAILABLE

135-200	PIP	Nougat vinyl, beige textile	1962-63
137-202	PIP	Light blue vinyl, blue textile	1962-63
138-203		Nougat vinyl, beige textile	1962-63
139-204		Light blue vinyl, blue textile	1962-63
140-205	PIP	Nougat vinyl, beige textile	1962-63
142-207	PIP	Light blue vinyl, blue textile	1962-63
147-224	PIP	Grey vinyl, grey textile	1962-63
148-225	PIP	Red vinyl, red textile	1962-63
149-226		Light grey vinyl, grey textile	1962-63
150-227		Red vinyl, red textile	1962-63
151-228	PIP	Grey vinyl, grey textile	1962-63
152-229	PIP	Red vinyl, red textile	1962-63
155-248	PIP	Grey vinyl, grey textile	1963-64
156-249	PIP	Red vinyl, red textile	1963-64
158-250		Grey vinyl, grey textile	1963-64
159-251		Red vinyl, red textile	1963-64
161-252	PIP	Grey vinyl, grey textile	1963-64
162-253	PIP	Red vinyl, red textile	1963-64
		USA-versions (all vinyl) special order	

AMAZON B18 1965-67 4-door

FOLLOWING INTERIOR PARTS AVAILABLE

1:5	→ Front door panels with masonite/textile/vinyl	pair	501.03
1:6	→ Rear door panels with masonite/textile/vinyl	pair	402.35
	→ Front seat upholstery (lower/upper)	pair	1462.09
	→ Rear seat upholstery (lower/upper)	pair	859.60
1:7	→ B-pillar upholstery	pair	210.56
	→ Head rest upholstery	pair	151.49

INTERIOR CODES AVAILABLE

167-502,171-506	Dark red vinyl	1965-66
175-523,179-527	Dark red vinyl	1965-67
168-503,172-507	Black vinyl	1965-67
170-505	Light blue vinyl	1965
178-525,185-547	Green vinyl	1966-67
183-545	Maroon vinyl	1967-68
184-546,187-549	Tan vinyl	1967-68

AMAZON Estate, 220, 1962-64**FOLLOWING INTERIOR PARTS AVAILABLE**

1:5	→ Front door panels with masonite/textile/vinyl	pair	501.03
1:6	→ Rear door panels with masonite/textile/vinyl	pair	402.35
	→ Front seat upholstery (lower/upper)	pair	996.50
	→ Rear seat upholstery (lower/upper)	pair	587.20
1:7	→ B-pillar panel	pair	210.56
	→ Cargo area side panels	pair	284.91
	→ Cargo area carpet and vinyl	pair	169.56

INTERIORS/CODES AVAILABLE

501-230	PIP	Nougat vinyl	1962-63
502-231	PIP	Grey vinyl	1962-63
503-232	PIP	Red vinyl	
504-215		Nougat vinyl. Beige fabric	1962-63
507-254	PIP	Grey vinyl	1964
508-255	PIP	Red vinyl	1964

AMAZON Estate, 220, 1965-69**FOLLOWING INTERIOR PARTS AVAILABLE**

1:5	→ Front door panels with masonite/textile/vinyl	pair	501.03
1:6	→ Rear door panels with masonite/textile/vinyl	pair	402.35
	→ Front seat upholstery (lower/upper)	pair	1462.09
	→ Rear seat upholstery (lower/upper)	pair	859.60
1:7	→ B-pillar panel	pair	210.56
	→ Head rest upholstery	pair	151.49
	→ Cargo area side panels	pair	284.91
	→ Cargo area carpet and vinyl	pair	169.56

INTERIOR CODES AVAILABLE

510-518,514-536	Dark red vinyl	1965-66
511-519	Black vinyl	1965-67
513-521	Light blue	1965
517-539,520-556	Green vinyl	1966-67
518-544	Maroon vinyl	1967-68
519-555	Tan vinyl	1967-68
515-537	Blue vinyl	1968
522-598	Beige vinyl	1969
523-599	Blue vinyl	1969
524-600	Red vinyl	1969

AMAZON B18 1962-64 2-door

FOLLOWING INTERIOR PARTS AVAILABLE

1:3	→ Door panels with embossing/masonite/chrome trim		pair	501.03
1:4	→ Rear side panel upholstery (to recover old panel)		pair	149.41
	→ Front seat upholstery (lower/upper)		pair	996.50
	→ Rear seat upholstery (lower/upper)		pair	587.20
	→ Front seat upholstery (lower/upper)	PIP	pair	1071.55
	→ Rear seat upholstery (lower/upper)	PIP	pair	1038.19

INTERIOR CODES AVAILABLE

401-189	PIP	Nougat vinyl	1962-63
403-191	PIP	Light blue vinyl	1962-63
404-192		Nougat vinyl, beige textile	1962-63
405-193		Light blue vinyl, blue textile	1962-63
406-233	PIP	Light grey vinyl	1962-63
407-234	PIP	Red vinyl, red textile	1962-63
408-235		Light grey vinyl, grey textile	1962-63
409-236		Red vinyl, red textile	1962-63
410-244	PIP	Light grey vinyl	1963-64
411-245	PIP	Red vinyl	1963-64
413-246		Grey vinyl, grey textile	1963-64
414-247		Red vinyl, red textile	1963-64
		USA-versions (all vinyl) special order	

AMAZON B18 1965-68 2-door

FOLLOWING INTERIOR PARTS AVAILABLE

1:3	→ Door panels with embossing/masonite/chrome trim		pair	501.03
1:4	→ Rear side panel upholstery (to recover old panel)		pair	149.41
	→ Front seat upholstery (lower/upper)		pair	1462.09
	→ Rear seat upholstery (lower/upper)		pair	859.60
	→ Headrest upholstery		pair	151.49

INTERIOR CODES AVAILABLE

416-514		Dark red	1965-66
417-515		Black	1965-68
419-517		Light blue	1965
420-532		Dark red	
424-551		Maroon	1967-68
425-552		Tan	1967-68
426-553		Green	1967
427-575		Blue - vinyl replaced by 1969 blue	1968
428-584		Black	
429-585		Maroon	

AMAZON B20 1969-70 2-door

FOLLOWING INTERIOR PARTS AVAILABLE

1:3	→ Door panels with embossing/masonite/chrome trim		pair	501.03
1:4	→ Rear side panel upholstery (to recover old panel)		pair	149.41
	→ Front seat upholstery (lower/upper)		pair	1462.09
	→ Rear seat upholstery (lower/upper)		pair	653.21
	→ Headrest upholstery		pair	151.49

INTERIOR CODES AVAILABLE

417-		Black	1969-70
430-595		Beige	1969
431-596		Blue	1969
432-597		Red	1969
434-636		Red	1970
435-637		Blue	1970

691612	R	Seat foam, front seat lower cushion		1965-68	each	225.85
691425	R	Seat foam, front seat upper cushion		1965-68	each	194.57
672021S	R	Head rest install kit	1/car	1965-72	set	171.99
673469	N				pair	165.04
955138		Screw for 673469	4/car		each	48.30
667514/15	RS	1:10 Rubber seal bottom of door panel (paper board included)		Left/Right	each	0.35
692002M	RS	Board for door panels			each	46.91
667690/91	RS	1:9 Rubber seal bottom of door panel	4D	Front/rear	each	46.56
692001M	RS	Masonite door panel	4D	Front/Rear	each	46.56
95290		Door panel anchorage			each	3.82
320448		Rubber seal bottom anchorage		16/car	each	2.08
950054		Screw for seat		4/car	each	4.52
1794		Screw for rear sidepanel			each	0.69
91944		Washer for 1794			each	0.35
92842	N	Frame for ashtray rear sidepanel			each	57.33
		Board panels				
659507/08	RS	1:15 Cardboard kick panel	Grey	-1964	pair	53.51
671064/63	RS	1:15 Cardboard kick panel	Black	1965-	pair	53.51
MSA1	RS	Mounting kit kick panels	1/car		pair	0.35
654542/43	RS	1:27 Kick panel retainer			each	39.26
671067/68	RS	1:16 Trunk side board panels	Grey/black		pair	59.07
671067/68-1	RS	1:16 Trunk panel "Reversed"	Grey/black		each	59.07
660442	RS	1:17 Board in trunk lid	Grey	-1964	each	66.36
671066	RS	1:17 Board in trunk lid	Black	1965-	each	66.36
		RUBBER MATS				
670698R	R	1:20 Front rubber mat	Black	1965-	each	773.09
670699	R	1:21 Rear rubber mat	Black	1965-	each	476.01
660677	R	1:23 Trunk rubber mat	Black	1957-70	each	579.90
508	R	Set of rubber mats (670698R/670699/660677)	Black		set	1625.39
277216/15	RS	Original accessory mats (In rubber)	Set of 4	Black/Grey	set	295.34
670867	R	1:20 Front rubber mat	Grey	1962-64	each	554.19
670868	R	1:21 Rear coupe rubber mat	Grey	1962-64	each	547.24
670698		1:20 Front rubber mat with jute felt		1965-	each	889.48
670698F	RS	Jute felt kit for front rubber mat (670698R)	Cut & fitted		set	74.70
670699F	RS	Jute felt kit for rear rubber mat (670699)	Cut & fitted		set	44.82
		FIREWALL CARPET				
659697	RS	Firewall carpet	Grey	-1964	each	171.64
691581	RS	Firewall carpet	Black	1965-	each	171.64
657905	R	Rubber button for firewall carpet 659697	7/car	Grey (-1964)	each	5.56
671261		Rubber button for firewall carpet 691581	7/car	Black (1965-)	each	5.21
671261AZ		Rubber button set for cowl felt in front	Set of 7	Black (1965-)	set	26.41
		CARPET SETS				
		<i>Includes front & rear floor sections, heel pad and hand brake boot</i>				
277220/23/27	RS	Black / grey / blue / light tan & red	Standard		set	735.56
277215T/16T	RS	Accessory carpet set, heelpad w.Amazon logo	Set of 4	Black/Grey	set	170.25

		Wagon (220) cargo area		1965-			
691597	RS	Mat rear tailgate		Grey	220	each	73.31
691589/90	RS	Sidepanel in cargo area		Grey	220	each	139.68
692932/33	RS	Wheel arch upholstery (vinyl/carpet)			220	each	84.78
691609	RS	Protection/accessory carpet		Grey	220	each	187.97
691597S	RS	Cargo area kit 220 (4 items above included, please state interior code)				set	617.43
691650/51	RS	Insulation mat under rear seat		Grey/Black	62-64/65-69	each	141.41
666001	RS	1:1 Dashboard padding Az standard			Standard	each	712.28
672577	RS	1:2 Dashboard padding Az 123 GT			123GT	each	717.49
672578		1:2 Dashboard padding Az 123 GT - RHD			123GT	each	717.50
32141010		Glue for dashboard installation				each	33.01
654299	R	Trim moulding for dashboard		1/car		each	129.25
663973	R	Anchorage for chrome trim		6/car		each	2.08
001	RS	Sound deadning board (self adhesive)		1x1	meter	1 m2	51.77
002	R	Jute felt for floor mats, burlap		85cm	width	per meter	13.20
004	R	Insulating jute felt 10mm thick		100	width	per meter	26.75
004-1	R	Insulating jute felt 7mm thick		100	width	per meter	25.36
671118	RS	Elastic band front and rear seat		3,22 m	per chair	per meter	20.15
671226	RS	Hook for elastic strap				each	2.08
671227	RS	Clamp for elastic band-hook		2/chair		each	2.08
659493	RS	1:19 Gear shift rubber boot		ch-54399	Grey	each	86.86
659701	RS	1:19 Gear shift rubber boot		ch 54400-	Grey	each	85.13
670875	RS	1:19 Gear shift rubber boot		1965-	Black	each	85.13
669582	RS	Hand brake boot		-1964	Grey	each	51.77
670876	RS	Hand brake boot		1965-	Black	each	51.77
HOOD/BONNET RUBBER PARTS							
657986	RS	Hood rubber seal		1957-65	Front	each	36.14
671629	RS	Hood rubber seal		1966-70	Front	each	36.14
663270	RS	Hood rubber seal		1957-65	Rear	each	36.14
92510	RS	Hood rubber seal		1966-70	Rear	each	36.14
40136	RS	Rubber gromet hood opening wire front			1/car	each	4.52
654507		Rubber gromet hood opening wire fire wall rear		B16	1/car	each	8.69
680011	R	Rubber gromet hood opening wire fire wall rear		B18	1/car	each	4.86
657180	RS	Hood opener (includes wire and handle)		1957-70	1/car	each	61.15
18335		Clamp for 657180			1/car	each	5.21
950020		Screw for clamp 18335			1/car	each	0.69
655545	RS	Rubber button hood			2/car	each	5.21
656577	RS	Rubber button front fender/hood			6/car	each	3.47
656578	RS	Rubber button set			8/set	set	27.45
657796	N	Bonnet catch, upper section		16's and B18	1/car	each	53.86
657797	N	Catch upper section		16's and B18	1/car	each	22.58
657798	N	Spring between 657796 & 657797		16's and B18	1/car	each	3.82
657974	N	Guide pin uppersection		16's and B18	1/car	each	26.06
657975	N	Fitting sleeve upper section		16's and B18	1/car	each	13.90
657793	N	Spring lower section		16's and B18	1/car	each	3.82

LIGHTS						
273547		Lamp housing (bucket) complete with mounting details			each	133.08
273547-1	R	Lamp housing (bucket) as above plastic			each	85.13
671739	RS	Outer chrome rim for headlight (stainless)			each	132.38
671260		Headlight retainer (stainless)			each	75.05
83590		Headlight inner bucket - steel			each	153.23
88052		Headlight rubber seal			each	10.08
115895	R	Headlight rim screw	2/car		each	7.64
87690		Headlight adjusting screw	4/car		each	6.60
83591		Headlight adjusting spring	8/car		each	5.56
MSA16		Mounting kit for lamphosing/fender	1/car		each	7.30
MS27		Mounting kit for retainer headlight to inner bucket	1/car		each	2.08
1212963		Headlight reflector & glass "Volvo" H4			each	116.40
238775-1	R	Headlight reflector & glass, asymmetric w/o park			each	73.31
661352/53	RS	Wiring harness headlamp	B16	ca.ch:21000-	each	51.77
671157/373	RS	Wiring harness headlamp	12V	LH/RH	each	51.77
89047		Cable grommet bucket			each	5.21
662109		Dome light (complete with frame / lens / button)			each	105.63
Turn signals						
673238/39	R	Lens amber/amber	US version	LH/RH	each	113.62
668911/12	R	Lens amber/white	Amber/white	LH/RH	each	113.62
668911V/12V	R	Lens white/white		LH/RH	each	113.62
666773/74	R	Turn signal lamp base		LH/RH	each	121.26
654772	R	Rubber casing turn signal	B16	2/car	each	14.25
666775/76		Rubber casing turn signal	B1820	LH/RH	each	37.87
661346/47	RS	Wiring harness	B16	ch:21000-	each	51.77
662123/24	RS	Wiring harness	B18	LH/RH	each	51.77
88273		Rubber grommet indicator cable	2/car		each	5.21
MSA17		Screw kit for lens	1/car		each	3.13
Side marker						
682772		Glas side marker	2/car	red	each	57.33
682774		Glas side marker	2/car	amber	each	57.33
682775		Bulb holder side marker	4/car		each	50.38
Taillight						
659096		Taillight lens	All red	1957-62	each	83.74
672426		Taillight lens (Swedish version)	Y/R/W	1963-	each	94.16
672333		Taillight lens w/ chrome rim	Y/R/W	1963-	each	201.18
667674		Taillight lens w/ chrome rim (US version)	d/Red/White	1963-	each	201.18
667676		Taillight lens (US version)	d/Red/White	1963-	each	107.36
667678		Rear chrome trim		1963-	each	114.66
667675		Taillight lamp base	2/4d/wagon	1963-	each	175.81
MSA18		Screw kit for reflector		1/car	each	1.04
192543		Taillight screw	upper	2/car	each	2.08
950099		Taillight screw	lower	2/car	each	2.08
654491/92		Reflector housing	2/4d	Vä/Hö	each	105.28
654483		Reflector lens	2/4d/wagon	2/bil	each	57.33
273242/43		Kit with reflector housing, reflector and rubber seal.	2/4d	LH/RH	each	144.89
668675		High/low beam switch		Bosch	each	102.50
668675R	R	High/low beam switch		Repro	each	60.80
MS28		Screw kit & nut for bearn switch		1/car	each	9.03

Relay/indicator & cigarr lighter					
658248		Switch light	B16	each	161.22
669102		Relay lights 12 Volt		each	92.08
1307991		Relay for headlamp dip via indicator		each	105.97
89111		Flasher relay	2-pin 6V	each	94.86
667408		Directional indicator switch	-1963 12V	each	68.45
667408-1	R	Flasher relay (repro)	B18 12V	each	23.97
667407		Directional indicator switch (wagner)	ch140000- 1964-67	each	62.54
667407-1	R	Flasher relay (repro)	B18 12V	each	14.25
686452		Directional indicator switch	B20 1969-70	each	68.45
662115	N	Switch for fan	t USA 68-70	each	53.86
654442		Nut for embllisher	B18	each	15.98
663047	R	Overdrive switch (comes with knob)		each	169.91
658225		Knob for overdrive switch/indicator switch		each	53.86
93931	N	Glow element	6V Casco	each	59.07
662108		Glow element	12V Casco	each	62.54
93544	N	Washer between glow element & knob 673107		each	5.56
673107	N	Knob for Cigar lighter		each	9.03
277238R	R	Cigar lighter compl	12V Casco	each	67.75
HORN SIGNAL					
238191		Restored horn	6V Bosch	each	95.20
240990		Restored horn	12V Bosch	high tone each	95.20
678841		Restored horn	12V HELLA	high tone each	95.20
stsi		Corecharge horn		each	53.86
658362	N	Horn retainer		each	12.16
658358	N	Horn spring		each	13.90
658378	N	Horn retainer		each	31.27
LICENCE LIGHT					
663059	R	Lens in trunk handle	220 2/car	each	27.45
668979		Lens in trunk handle	1964-70 2/car	each	62.54
668942		Bulb holder (used)	2/car	each	5.21
668982		Rubber grommet for lead wire	2/car	each	3.82
192610	R	Screw for lens trunk handle	1964-70 2/car	each	3.13
TAILLIGHT GASKETS + COMPARTMENTS					
13319	RS	Moulding between reflector body	0,8m/car	each	8.69
13319	RS	Moulding used in a number of places can be used at trunk handle		meter	10.77
663581	RS	Gasket rubber rear light housing	1959-62 2/car	each	45.86
667612		Gasket rubber rear light housing	1963-70 2/car	each	20.50
660555	RS	Trunk handle gasket	1959-63 1/car	each	37.53
669071		Original seal moulding trunk handle	1964-70 0,35/car	each	13.20

BULBS						
182035	R	Symetric 45/40W headlight	45/40W	6V	each	13.55
182035-1	R	Symetric 45/40W headlight	45/40W	6V	each	13.55
277730	R	Asymetric 45/40W headlight	45/40W	12V	each	13.55
277752	R	Headlight bulb H4, 60/55W	60/55W	12V	each	13.55
19897	R	Turn signal		6V	each	4.86
191188	R	Turn signal		6V	each	4.86
277707	R	Turn signal / parking light		12V/5W	each	4.86
277724	R	Turn signal	chn.-102034	12V/20W	each	4.86
277721	R	Turn signal	chn.102034-	12V	each	4.86
191188	R	Stop & taillight	chn.-20999	6V	each	4.86
19897	R	Stop & taillight	chn.21000-	6V	each	4.86
277724	R	Taillight upper	1957-62	12V	each	4.86
277728	R	Taillight lower	1957-62	12V	each	4.86
277721	R	Taillight upper	1963-	12V	each	4.86
277729	R	Taillight middle	1963-	12V	each	4.86
277722	R	Taillight lower	1963-	12V	each	4.86
182007	R	Licence light	B16	6V	each	3.47
277707	R	Licene light	-1964	12V/5w	each	4.86
277713	R	License light	1964-	12V	each	3.47
277715	R	Licence light	20 ch# -8274	12V/5w	each	3.47
277713	R	Licence light	20 ch# 8275-	6V	each	3.47
182057	R	Interior light		6V	each	3.47
277715	R	Interior light		12V	each	3.47
277721	R	Engine & trunk lights bulb		6V/4W	each	4.86
19901	R	Instrument		6V/2W	each	4.86
277703	R	Instrument /warning		12V/2W	each	4.86
277705	R	Oil pressure		12V/6W	each	4.86

ENGINE COMPONENTS

Cooling system

252056	R	Radiator unit	57-60	B16	each	955.50
252087	R	Radiator unit	61-66	B18	each	984.34
252111	R	Radiator unit, closed system	67-70	B18/B20	each	984.34
87502		Radiator drain cock	-1966	B16/18	each	74.70
HG14040	RS	Radiator leak sealant	160 gr		each	53.86
HG14041	RS	Radiator cleaner	150 gr		each	53.86
660094		Radiator hose	upper	B16	each	33.36
660095	R	Radiator hose	lower	B16	each	33.70
663031	R	Radiator hose	upper/lower	1962-66	each	28.14
676556	R	Radiator hose	upper	1967-70	each	27.45
673196	R	Radiator hose	lower	1967-70	each	29.19
942700	RS	Radiator hose between expander & radiator	1967-70		meter	14.94
952659	RS	Hose clamp radiator hose 25-32 mm			each	4.17
673989		Rubber bushing for radiator	3/car	B18	each	7.64
273062	R	Radiator hose kit	1/car	1962-66 B18	set	78.18
418334		Water inlet pipe		B18/B20	each	54.55
419331		Water outlet pipe		B18/B20	each	67.41
87842	R	Radiator cap	-1966	B16/18	each	43.43
461646		Radiator cap incl. Gasket	1967-70	B18/B20	each	34.05
676553	RS	Gasket for 461646		B18/B20	each	3.82
686833		Expansion tank		B18/B20	each	141.41
673336	R	Expansion tank cap		B18	each	48.30
673233	R	Expansion tank cap		B20	each	55.59
687103	RS	Gasket for 673233		B20	each	8.69
273163	R	Thermostat (state temp.)		B16	each	51.77
273164	R	Thermostat (state temp.)		B18/B20	each	36.48
418496	N	Thermostat 77°C - 170°F	B18/B20	Original	each	53.86
403161	RS	Thermostat gasket		B16	each	5.21
418361	RS	Thermostat gasket (rubber)		B18/B20	each	7.30
403793	RS	Gasket thermostat housing to engine	1/car	B16	each	5.21
418325		Aluminium housing for thermostat	-1966	B18/B20	each	104.24
419333		Aluminium housing for thermostat	1967-	B18/B20	each	104.24
418031	R	Waterpump (incl gasket)		B16	each	382.55
403105	RS	Gasket for waterpump		B4B/B16	each	7.64
13911	RS	Hose waterpump/housing		B4B/B16	each	9.73
271602		Water pump	ORIGINAL	B18/B20	each	234.53
271602-1	R	Water pump	REPRO	B18/B20	each	112.92
270664	R	Repair kit waterpump		B18/B20	set	16.33
275603	N	Repair kit for waterpump	Original	B18/B20	each	129.25
951684	R	Fan belt		B16	each	25.02
960282	R	Fan belt		B18/B20	each	23.28

Carburetors						
55192	RS	Choke wire, single carburetor		B16/B18/B20	each	41.35
55192-2	RS	Choke wire, double carburetor		B16/B18/B20	each	67.75
664425	R	Rubber grommet for choke wire (holds cables together)			each	12.86
418561		Cable retainer	2/car	B18 B/D	each	12.86
950003		Screw for reatiner	2/car	B18 B/D	each	2.08
276413	RS	Repair kit carburetor VN 34	1957-60	B16A	set	225.50
276286	RS	Repair kit carburetor VN 36	1961-68	B18A	set	225.50
275418		Gasket kit Zenith carburetor	VN34/36		each	35.44
275489	RS	Repair kit carburetor Stromberg (incl.needle)	CD175	B18	set	197.01
276295	RS	Repair kit carburetor Stromberg (incl.needle)	CD175	B20	set	218.20
271474		Gasket kit Stromberg		B20A	each	24.32
276217	R	Repair kit carburetor SUH6		B16B	pair	641.05
276278	R	Repair kit carburetor SUH6	1961-68	B18	pair	356.14
276292	R	Throttle shaft kit	1961-68	B18	set	169.91
276290	RS	Throttle spindle kit with bushes	1967-69	B18	set	92.42
237009		carburetor needle SU		B16B	each	53.86
237050		carburetor needle SU		B16B	each	59.07
237221		carburetor needle SU H6	ZH		each	57.33
237255		carburetor needle SU H6	KF		each	66.36
237248		carburetor needle SU H6	KD		each	59.07
237315		carburetor needle SU H6	DX		each	54.20
237103		carburetor needle SU H6	TZ		each	64.97
237346		Carburetor needle Stromberg	ch-333999	B20 1969	each	69.84
237441		Carburetor needle Stromberg	ch 33400-	B20 1970-72	each	80.61
237350		Carburetor needle Stromberg		B20B 1969-70	each	80.61
656871		Rubber bushing carburetor/aircleaner		B16A/B18A	each	54.20
656871-1		Rubber bushing carburetor/aircleaner	USED	B16A/B18A	each	18.76
403919	RS	Gasket carburetor	VN34	B16	each	5.56
403882	RS	Gasket carburetor	VN36	B18	each	5.91
237106		Gasket carburetor			each	5.21
419888		Isolator washer		B18A	each	50.03
237161	N	Emulsion block	VN36	B18	each	141.41
237193		Acceleration jet #50	VN36	B18	each	26.75
418754		Gasket stromberg carburetor	1961-70		each	3.82
820352		Screw for lid to stromberg carbuettor		B18A	each	2.08
237058	RS	Diaphragm kit (spring,gaskets & diaphragm)		VN34/VN36	each	35.09
237666	R	Diaphragm		Stromberg	each	17.03
237023	R	Float		VN34/VN36	each	28.14
237186	R	Jet SU	1+1/car	B18	each	92.42
237187	R	Jet SU		B18	each	97.63
419796	R	Fuel hose (to pump)	1965-70		meter	13.20
419797	R	Fuel hose rubber (pump - carburetor)	1965-70		meter	13.20
237027	RS	Restored carburetor (VN34)	1957-60	B16A	each	644.18
237128	RS	Restored carburetor (VN36)	1961-66	B18A	each	626.46
237243	RS	Restored carburetor Stromberg	CD175	B18	each	757.80
237802	RS	Restored carburetor Stromberg	CD175	B20A	each	757.80
237802-1		Carburetor 175CD B20A NEW	CD175	B20A	each	1020.13
237069	RS	Restored carburetor SU	SU	B16B	pair	1423.87
237245	RS	Restored carburetor SU 2-bolt	SU		pair	1423.87
237314	RS	Restored carburetor SU 3-bolt	SU		pair	1400.59
STFÖ		Exchange system, refundable corecharge			each	86.86

Air filter						
660447		Airfilter incl new bolts	2/car	B16B	each	161.22
660447-1	R	Airfilter insert	2/car	B16B	each	44.82
73607	RS	Air filter	1961-64	B18A	each	34.05
952982	R	Connecting (rubber) hose for air/oilbath filter	1961-1966	B18A	each	24.67
951798	R	Hose clip for 952982	2/car	B18A	each	5.91
663852	N	Bracket for airfilter 73607	1961-64	B18A	each	43.43
MSA19		Mounting kit for bracket 663852	1961-64	B18A	each	15.98
73606R	R	Air filter (repro Aluminum)	1961-66	B18B/D	each	43.43
73606		Air filter (original - blue)	1961-66	B18B/D	each	105.63
73604		Airfilter oil bath		B18A	each	137.24
669893		Air filter	1961-66	B18A	each	286.65
679260		Air filter without pipe	1967-	B18A	each	203.96
679261		Air filter with pipe	1967-	B18A	each	202.22
656871		Rubber bushing carburetor/aircleaner	1961-66	B16A/B18A	each	54.20
955531		Screw for 679260	3/car	B18A	each	5.91
955530		Screw for 679261 & 672280/81	3/car	B18A	each	5.91
MS29		Screw kit for 73606	1/car	B18B/D	each	10.08
672280/81		Air filter (front/rear)	1967-68	B18B/D	each	94.16
1277775		Air filter house & insert	1969-70	B20A	each	80.96
681437	R	Air filter insert	1969-70	B20A	each	26.75
679658	R	Air filter Sport model	1969-70	B20B	each	60.80
403919	RS	Gasket for airfilter 660447		B16B	each	5.56
677607		Gasket for airfilter 679658 & 672280/81 & 73606		B18B/D/B20B	each	5.56
680642	R	Gasket for airfilter 681437	1969-70	B20A	each	5.91
679623	N	Clamp for airfilter house 679658	1969-70	B20A	each	5.56
Electrical/ignition system parts "BOSCH"						
2844PX		Electrical ignition	1965-68	B18B/D	each	484.70
1847VC		Electrical ignition	-1974	B20	each	340.16
870690		Distributor cap		B16/B18/B20	each	47.95
1277720		Distributor cap	1971-73	B20	each	46.21
418265	RS	Gasket under distributor		B18/B20	each	2.78
976733		Rubber hose to vacuum governor		B18/B20	meter	13.90
241654		Vacuum Governor		B20A	each	205.69
241665		Vacuum Governor		B20B	each	273.79
233677		Distributor point kit		B16	each	23.97
238859		Distributor point kit	B18A-68	B18D-64	each	22.58
240149		Distributor point kit	1965-68	B18B/D	each	22.58
241652		Distributor point kit		B20A	each	20.15
1306169		Distributor point kit	1969-73	B20B/E	each	20.15
76977		Distributor rotor		B16	each	37.53
238258		Distributor rotor	-1964	B18	each	37.53
243903		Distributor rotor	1965-70	B18/B20	each	25.36
77732		Condensor		B16	each	43.43
241397		Condensor		B18	each	25.02
241650		Condensor	1969-71	B20	each	23.28

Fuses					
11434	R	Fuse 25A (short) (glass)	25A		each 5.56
11433	R	Fuse 8A	8A		each 1.39
942545	R	Fuse 8A	8A	123GT	each 1.39
942785	R	Fuse 16A	16A	123GT	each 1.39
192228		Fuse box		B18	each 95.90
192229		Fuse box lid		B18	each 83.04
667698	RS	Decal fuse box lid		6V/12V	each 9.73
182008	N	Cable joint, red with text "Volvo"		B16	each 5.21
Ignition coils					
238960		Ignition coil		B18/20	each 1368.62
35254		Ignition coil (replaces 241609)		B20	each 116.40
241611-1	R	Ignition coil 12V (replacement, not original)	12V		each 128.56
241611PX		Ignition coil 12V (replacement, not original)	12V		each 212.99
1219099		Ignition Coil bracket			each 18.07
275652	RS	Ignition cable set	Red	B16	set 65.32
275660	RS	Ignition cable set	Red	B16/18/20	set 103.19
673580	R	Rubber casing starter cable			each 7.64
403296	R	Spark plug (14 mm)		B4B/B16A	each 13.90
403297		Spark plug		B16B	each 13.90
271411	R	Spark plug	B18B/D	B20B/D/F	set 59.76
271412	R	Spark plug		B18A/B20A	set 59.76
Distrubutor reubuilt					
241298		Distrubutor		late B18B	each 554.88
241530		Distrubutor	1969	B20B	each 590.67
243314	R	Distrubutor (Replace also 241719+243184)		B20E/F	each 662.25
Stfd		Chorecharge distrubutor			each 173.73
Battery & Earth strap					
190398	RS	Battery lead, battery-starter engine		B16	each 44.82
192647	RS	Battery lead, battery-starter engine		B16/18/20	each 69.84
11417	RS	Earth strap battery-body		B16/18/20	each 14.59
190339	RS	Earth strap engine-body		B16/18/20	each 12.16
952625	RS	Rubber clamp 10 mm			each 2.08
Starter motor					
233679	R	Carbon brush kit starter	Bosch	B16	set 23.97
233679	R	Carbon brush kit starter 238620	Bosch	early B18	set 23.97
238817	N	Brush spring	Bosch	early B18	each 7.30
240604	R	Carbon brush kit starter	Bosch	B18/B20	set 18.76
240360		Engine starter	Bosch	B18/B20	each 371.43
240619		Starter pinion for 240360	Bosch	B18/B20	each 160.18
238824		Starter pinion for 238620	Bosch	B18/B20	each 233.84

Dynamo						
238479	R	Carbon brush kit generator	Bosch	B16	set	23.97
273500	R	Carbon brush kit generator	Bosch	B18/B20	set	21.54
238801		Brush spring	Bosch	B18/B20	each	6.95
238640		Voltage regulaor D/C		12V	each	279.70
MS103	RS	Mounting kit voltage regulator	-1964	12V	each	1.39
MS104	RS	Mounting kit voltage regulator	1965-	12V	each	1.39
11010		Front bearing for dynamo	Dynamo	B18B	each	22.58
190718	N	Nut for 238793	Dynamo		each	3.82
11009		Rear bearing for dynamo	Dynamo	B18B	each	23.97
238621	RS	Generator (rebuilt)	1961-68	B18	each	642.44
STGE		Core charge refunded only if returned generator includes bearings			each	156.35
MS102	RS	Mounting kit for generator incl bushings		B18	each	27.45
403877		Rubber bushing for generator	8/car	B18	each	4.52
Alternator						
419420	RS	Alternator with relay	35A		each	613.60
419420R		Alternator W/O relay	35A		each	447.52
STGE		Corecharge only generator including bearings			each	156.35
B1866	R	Bracket kit alternator			each	57.33
1259303		Charging relay (old partnr 419589)	-339999	SEV	each	161.22
1259303R		Charging relay (old partnr 241534)	-339999	SEV	each	129.25
1308030R		Charging relay (old partnr 241534)	340000-	Bosch	each	197.01
244456	R	Carbon brush kit generator	Bosch	B18B/B20	set	21.89
241698	N	Repair kit for alternator at NOS please ask			each	
		Repair kit for terminal		B20	each	86.86
Wiring harness, Electrical Connectors						
242	R	Wiring harness complete		B18	each	1253.27
243	R	Wiring harness complete	1969-70	B20	each	1253.27
244	R	Wiring harness complete	1967-68	123GT	each	1400.59
10566		Workshop manual elecrical system	Eng	120	each	60.11
958211		Headlamp connector (box+3 spade connectors)			each	9.38
958214/15	R	Connector box including connectors	black		each	33.01
191676	N	Bridging connector (in connector box)			each	15.29

Engine gaskets						
403808		Cylinder head gasket		B16	each	89.64
418990	R	Cylinder head gasket		B18	each	59.07
460552	R	Cylinder head gasket		B20A	each	59.07
419763	R	Cylinder head gasket		B20B	each	89.64
403833	RS	Head to manifold gasket	Copper	B16	set	60.80
418870		Head to manifold gasket	original	B18/B20	each	40.65
403546	R	Manifold to exhaust gasket	single	B16/B18	each	11.12
671822	R	Manifold to exhaust gasket	double	B18/B20	each	11.12
191163	R	Bolt for manifold inlet	40 mm	B16	each	3.82
17624		Nut for manifold	6/car	B16	each	5.56
953259		Bolt for manifold gasket 403546/671822	2/car	B16/B18	each	4.52
190852	R	Nut for exhaust manifold 953259	2/car	B16/B18	each	4.52
953238		Bolt for manifold inlet L38		B18/B20	each	4.52
953239		Bolt for manifold inlet L40		B18/B20	each	9.03
953240		Bolt for manifold inlet L42		B18/B20	each	6.95
953241		Bolt for manifold inlet L45		B18/B20	each	5.91
953243		Bolt for manifold inlet L50		B18/B20	each	5.91
191169		Washer manifold	D=22		each	3.82
955826		Nut for bolts 953238-43			each	1.39
419564	N	Gasket cover manifold	Sport	B18/20	each	11.81
54971	RS	Cylinder head gasket set		B16	each	155.66
275411	R	Cylinder head gasket set		B18	set	130.99
275536	R	Cylinder head gasket set	-1972	B20	set	130.99
54970	RS	Engine gasket kit		B16	set	222.02
275494	R	Engine gasket kit		B18	set	205.35
275535	R	Engine gasket kit		B20A/B	set	205.35
275553-1	R	Engine gasket kit		B20E	set	232.79
273060	RS	Engine mount incl nuts & washers		B16/18/20	each	32.31
666890		Engine mount	123GT	B20B	each	46.91

Mechanical Engine parts						
276658-62	R	Rod bearing kit (Sizes available: Std / 0,010" / 0,020")		B16	set	207.43
276686-90	R	Main bearing kit (Std / 0,010" / 0,020")		B16	set	253.99
271214-18	R	Main bearing kit (Std / 0,010" / 0,020")		B18/B20	set	141.41
271051-55	R	Rod bearing kit (Std / 0,010" / 0,020")		B18/B20	set	105.63
275112/21/22/23	R	Piston with rings (Std / 0.020" / 0.030" / 0.040")		B16	each	356.14
275194/95/96/97	R	Piston with rings (Std / 0.020" / 0.030" / 0.040" / 0.050")		B18	each	234.53
272002-12-04	R	Piston with rings (Std / 0.015" / 0.030")		B20	each	234.53
275215-18	R	Piston ring set (Std / 0.020" / 0.030" / 0.040")		B16	set	187.97
275282-85	R	Piston ring set (Std / 0.020" / 0.030" / 0.040")		B18	set	187.97
275334-36	R	Piston ring set (Std / 0.015" / 0.030")		B20	set	187.97
403486	R	Exhaust valve	4/car	B16	each	62.54
403881	R	Intake valve	4/car	B16	each	62.54
419292	R	Exhaust valve	4/car	B18	each	44.82
419368	R	Intake valve	4/car	B18	each	44.82
419639	R	Intake valve	4/car	B20	each	39.26
419640	R	Exhaust valve	4/car	B20	each	39.26
403390	R	Valve guide in/out	8/car	B16	each	28.84
415266	R	Valve guide in/out	8/car	B18	each	18.76
419652	R	Valve guide intake valve	4/car	B20	each	18.07
419653	R	Valve guide exhaust valve	4/car	B20	each	18.07
418295	R	Rod bushings std	4/car	B18/B20	each	15.98
403717		Valve spring	8/car	B16	each	20.50
418737	R	Valve spring	8/car	B18/B20	each	20.50
415035	N	Valve collet	16/car	B18	each	5.56
419643		Valve collet	16/car	B20	each	4.52
18146	N	Bushing rockerarm	8/car	B16	each	8.69
418297	R	Bushing rockerarm	8/car	B18/B20	each	15.98
130078	N	Stud for bearing bracket	2/car	B16	each	20.85
418286	N	Adjuster screw rockerarm	8/car	B18/B20	each	8.69
921781		Nutt for adjuster screw 418286	8/car	B18/B20	each	0.69
191689	N	Bolt for bearing bracket	4/car	B18/B20	each	2.08
415424	RS	Valve rubber seal	8/car	B16/B18	set	33.36
1306630	RS	Valve rubber seal	12/car	B20 69-	st	4.52
191523		Head bolt	10/car	B18/B20	each	14.25
82744		Drain cock valve on engine	1957-60	B16	each	39.96
82745		Drain cock valve on engine	61-70	B18/B20	each	46.91
70792		Frost plug 42mm	4/car	B4B/B16	each	7.30
418677	R	Frost plug 42mm	1/car	B16/B18/B20	each	5.56
418717	R	Frost plug 35mm	2/car	B18/B20	each	5.56
418718	R	Frost plug 45mm	7/car	B18/B20	each	5.56
276274		Timing gear set	Fibre	B4B/B16	set	375.95
270690	RS	Timing gear set	Fibre	B18/B20	set	380.46
271944	RS	Timing gear set	Steel	B18/B20	set	506.24
190219	RS	Felt seal crank shaft	rear	B16	each	5.91
190537	RS	Felt seal crank shaft	front	B16	each	9.03
418621/22	RS	Felt oil seal crankshaft	rear/front	B18/B20	each	12.51
430134	R	Gasket rear flange		B18/B20	each	7.64
1218634	R	Rear flange with rubber seal gasket (converts fealt seal to oil)		B18/B20	set	137.24
430118	R	Oil seal for modern style sealing		B18/B20	each	32.66

11009	R	Fly wheel bearing		B16/18/20	each	23.97
191848		Lock ring for 11009		B18/B20	each	4.17
418663		Cover plate for 11009		B18/B20	each	20.85
403075/74	RS	Timing cover gasket	front/rear	B4B/B16	each	
418272	RS	Gasket timing gear casing		B18/B20	each	13.90
955514		Screw for timing cover 25mm	2/car	B18/B20	each	1.39
940158		Screw for timing cover 45mm	7/car	B18/B20	each	2.08
941906		Wascher	9/car	B18/B20	each	0.35
418416	N	Oil nipple behind timing gear casing	1/car	B18/B20	each	34.05
1218706	R	Oil pump		B18/B20	each	309.58
418627	N	Oil delivery pipe		B18	each	53.86
419539		Oil delivery pipe		B20	each	101.80
418360		Rubber seal for oil delivery pipe		B18/B20	each	5.91
418277		Distributor drive gear		B18/B20	each	189.71
418288		Strainer for oil pump		B18/B20	each	99.02
418289	N	Lock ring for strainer		B18/B20	each	18.07
403017	RS	Oil pan gasket		B16	each	35.09
418262		Oil pan gasket	original	B18/B20	each	35.09
955523/24		Bolt for sump attachment length 16mm/19mm		B18/B20	each	1.04
403984	R	Oil filter		B16	each	37.87
3517857		Oil filter 1962- (Original/Replacement)	1962-	B18/B20	each	23.97
191086	N	Oil drain plug	1"	B18/B20	each	14.25
948187	R	Oil drain plug (magnetic) incl 18818	3/4"	B18/B20	each	22.58
190798	R	Oil drain plug (B16 from engine 70563)	3/4"	B18/B20	each	13.20
18818	R	Copper gasket drain plug		B18/B20	each	3.13
672910	R	Oil pressure sender		B16/B18/B20	each	23.63
403515		Oil filler cap (without ventilation cap)		B18/B20	each	66.36
418954		Oil filler cap (with ventilation cap)		B18/B20	each	121.61
940096		Gasket oil filler cap	Original	All mod	each	7.64
460003		Hose for oil filler cap			each	23.28
2A9002	R	Valve cover aluminum		B18/B20	each	449.95
403087	RS	Valve cover gasket		B16	each	23.97
419678	R	Valve cover gasket		B18	each	19.46
950045		Screw for valve cover	4/car	B18/B20	each	1.04
418412		Seal ring oil trap/breather pipe early mod.	di = 21	B18/B20	each	5.91
419805		Seal ring oil trap/breather pipe early mod.	di = 26	B20	each	7.64
943706		Hose crank case ventilation		B18	m	26.75
942390		Hose crank case ventilation		B20	m	24.32
419422		Hose between oil trap & nipple		B18	each	20.15
418982		Valve between 419422 & 942390		B18	each	30.58
Camshaft & valve lifters						
403737		Camshaft		B16	set	529.87
275761-64	R	Camshaft set (with lifters) Type A / C / D / K		B18/B20	set	455.51
275765	R	Camshaft set (with lifters) Type R		B18/B20	set	501.03
418423		Valve lifter	8/car	B18/B20	each	19.46
418304		Push rod	8/car	B18/B20	each	34.05
419681		Thrust flange	1/car	B18/B20	each	43.08
418363	N	Spacer ring	1/car	B18/B20	each	19.46
150169	N	Nut for camshaft	1/car	B18/B20	each	15.98
910118		Woodruff key on camshaft	1/car	B18/B20	each	9.03
293		Grease for camshaft			each	10.77

10768	N	Nut for camshaft	1/car	B16	each	17.37
15181	N	lock washer for camshaft	1/car	B16	each	4.17
403484	N	Bolt for connecting rod	8/car	B16	each	22.58
150106	N	Nut for connecting rod	8/car	B16	each	5.21
403110S		Cam bearing kit		B4B/B16	set	123.35
430119		Cam bearing kit		B18/B20	set	83.04
9434521	RS	Engine paint red	1 Liter	57-70	liter	102.50
9434521-1	RS	Engine paint red (enough for one engine)	0.33 liters	57-70	1/3 litre	46.91
006	RS	Paint for exhaust manifold	Liter		liter	128.56
006-1	RS	Paint for exhaust manifold	0,33 L	1/3 litre	1/3 litre	55.59
10228		Workshop manual engine	English	B16B	each	60.11
10400/02		Workshop manual engine	Swedish/Eng	B18A	ea	60.11
10114/15		Workshop manual engine	Swedish/Eng	B18B/D	ea	60.11
FUEL SYSTEM						
276223	R	Fuel pump repair kit (AC)	1957-64		set	146.63
276281	R	Fuel pump repair kit (AC - 419291)	1965	B18	each	92.42
276520	R	Fuel pump repair kit (for 418878)	1966-70	B18	each	110.49
18780	RS	Gasket fuel pump rubber			each	5.91
61830	RS	Engine to fuel pump gasket	2/car		each	4.17
460678		Spacer fuel pump (backelit)			each	26.75
418878	R	Fuel pump	B18	1965-	each	103.54
13525	RS	Fuel filler hose	AZ 220		each	33.70
121520	RS	Filler hose clamp for 13525	2/car		each	5.56
64757	RS	Fuel hose, fuel line to fuel pump (metal)	57-65	57-65	each	64.28
661882	N	Fuel hose, fuel pump to carburetor		57-65	each	208.47
419796	R	Fuel hose rubber in front of pump	1965-70		meter	13.20
419797	R	Fuel hose rubber pump to carburetor	1965-70		meter	13.20
954343		Elbow union	Ch-41156	B16A	each	37.53
16218		Elbow union	CH-22568	B16B	each	36.14
260020	R	Fuel tank	AZ STD	B16/B18/B20	each	858.91
662152		Fuel guage sender	AZ STD	B18/B20	each	206.74
662155		Fuel guage sender	220	12V	each	264.41
89865		Gasket tank to meter			each	13.55
655617	N	Protecting plating fuel gauge sender		B16/B18	each	22.58
950021		Screw for fuel tank		5/car	each	1.04
MSA14	R	Screw kti for tank			each	4.86
007		Gas tank sealer			litre	105.63
653212		Fuel rubber grommet PV			each	21.19
662463		Fuel cap PV	AZ STD		each	58.02
16335	RS	Gasket for fuel cap 662463	Rubber		each	10.08
954305	R	Fuel pipe under car "bundy pipe"	5 meter		each	141.41
954322	R	Union (cap) nut for fuel pipe & fuel tank			each	10.77
464728		Fuel filter		B18/B20	each	8.69

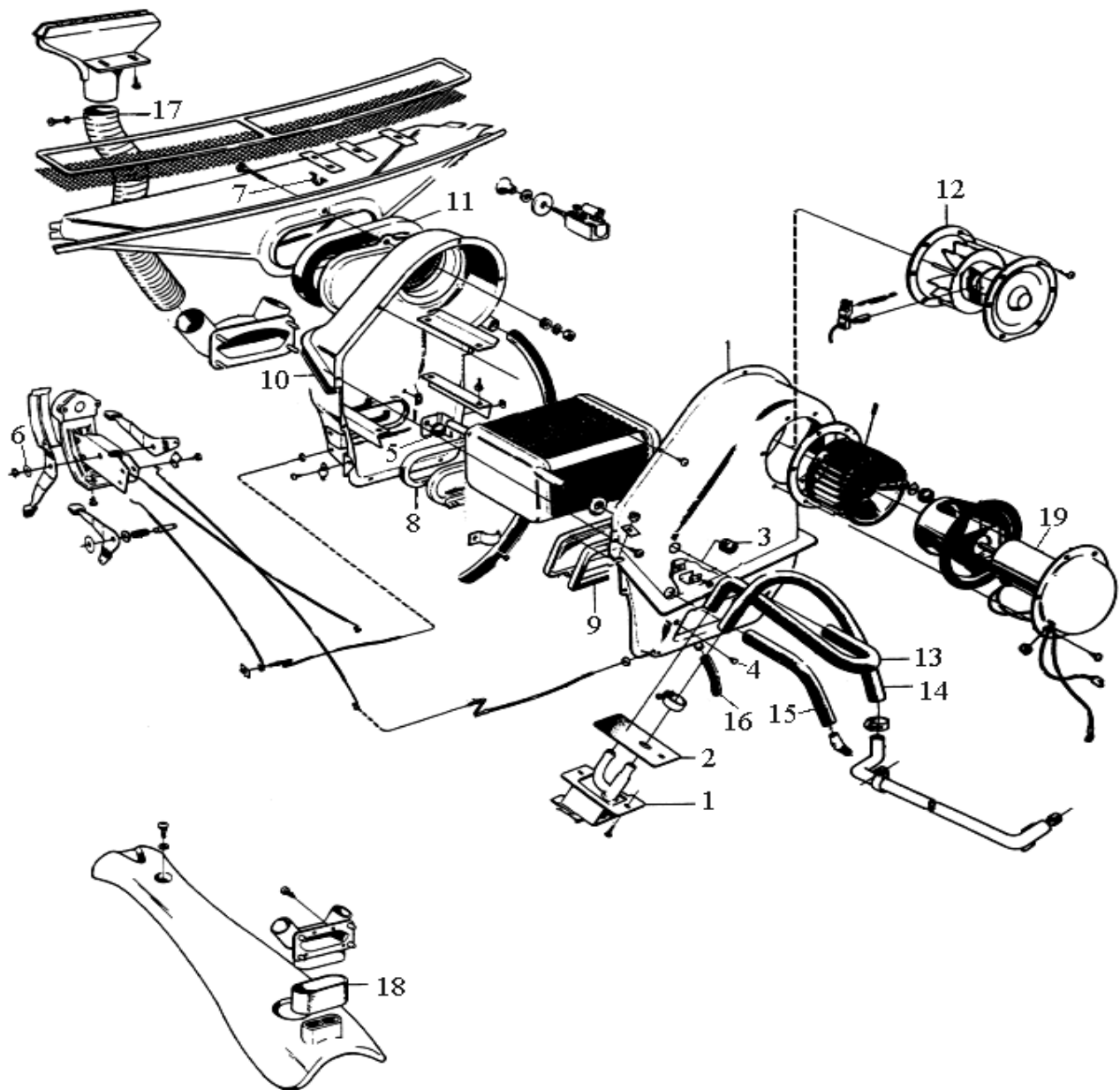


Fig 2: Heater System

HEATER SYSTEM

673452		2:1	Heater valve	1/car		each	330.08
659357	RS	2:2	Gasket heater valve to firewall	1/car		each	7.64
94081		2:3	Rubber button heater element	2/car	B16/B18	each	5.56
82429			Rubber plug heater	8/car		each	4.69
93963	RS	2:4	Rubber button heater element	1/car	B18/B20	each	5.91
40136	RS	2:5	Rubber button heater element	1/car	B16/B18	each	4.52
61544	N	2:6	Washer for heater element			each	1.91
654290	R		Clip for fresh air intake steel	5/car	B16	each	4.17
672382		2:7	Clip for fresh air intake plastic "white"	6/car	B18/B20	each	5.56
672382-1	R	2:7	Clip for fresh air intake plastic "black"	6/car	B18/B20	each	2.78
658722	RS	2:8	Rubber gasket for flap	1/car		each	10.08
658728	RS	2:9	Rubber gasket for flap	1/car		each	10.08
659752	RS	2:10	Rubber gasket for casing (square)	1/car	Fyrkantig	each	21.54
658731	RS	2:11	Rubber gasket for casing/air intake (oval)	1/car	Oval	set	21.54
659139	RS	2:12	Rubber gasket between casing & turbine rotor	1/car		each	10.42
13569	RS		Heater hose red	2m / bil	B16	m	18.76
660047	R	2:13	Heater hose	1/car	B16/B18	each	26.75
943053	RS	2:14	Heater hose	1/car	B16/B18	each	16.16
943053RED	RS	2:14	Heater hose, red	1/car	B16/B18	each	16.16
673705	R	2:15	Air duct rubber	1/car	B16/B18	each	23.97
682140	R		Heater hose	1/car	B20	each	44.82
673637	R		Heater hose	1/car	B20	each	33.01
673639	R		Heater hose	1/car	B20	each	37.53
951789			Hose clamps	6/car		each	4.17
661063		2:16	Draining hose	1/car	All	each	5.21
191136AZ	RS		Air duct rubber rubber	1/car	B16	each	55.59
672483P	RS	2:17	Air duct rubber paper/aluminium	1/car	1957-1964	each	23.28
672483		2:17	Air duct rubber plastic	2/car	1965-1970	each	57.33
944405	RS		Air duct paper/aluminum		B20A/B	each	23.28
670391		2:18	Rubber hose on air duct (rear)			each	8.34
419331			Coolant pipe		B18/B20	each	67.41
658716			Fan motor "restored"		6V	each	277.27
661170		2:19	Fan motor "restored"		early 12V	each	277.27
668606AZ		2:19	Fan motor "restored"		12V	each	277.27
STFL			Core charge fan motor			each	104.24
10221/22			Workshop manual heatersystem	Swedish/Eng		each	60.11

GEAR BOX PARTS						
381107	RS	Gasket gear box	"cork"	M30/M40	each	13.20
275415	RS	Gasket kit	-1966	M30/M40	each	64.28
270745	RS	Gasket kit	1967-70	M30/M40	each	64.28
270744	RS	Gasket kit		M41	each	64.28
276502		Gasket kit		BW35	each	53.16
191685	R	Seal ring gearbox incoming axle front		M30/M40	each	22.24
19933	R	Seal ring gearbox outgoing axle rear	rear	-1966	each	18.76
942350	R	Seal ring gearbox outgoing axle rear	rear	1967-	each	26.06
656138		Synchronizing cone		M30/M40	each	161.57
191498/99	N	Snap ring thickness 2,1/2,2	M30/M40		each	10.42
86713	R	Spring	M30/M40		each	5.91
181330/31		Needle Bearing	M40		each	51.77
656514		Dog		3/car	each	10.08
380141		Dog		3/car	each	14.25
11009	R	Support bearing for gearbox input shaft			each	23.97
19568	N	Bearing main axle gearbox	2/car	H3/4/4/6	each	67.75
18431	N	Bearing incoming axle	front	M4/H6	each	74.36
11145	R	Bearing incoming axle	front	M30/M40	each	74.36
11013	R	Bearing outgoing axle M30/40 up to -1966	rear	M41-1968	each	37.53
11024	R	Bearing outgoing axle M30/40 1967-70	rear	M41 1969-70	each	41.35
181120		Roller for main axle	14/car	M30/M40	each	5.56
380136	N	Main drive pinion	1/car	M30/M40	each	232.79
656551			2/car	2/car	each	17.72
380157		Counter shaft for laygear			each	174.77
19567		Needle bearings for laygear	48/car		each	1.74
87972		Spring on ball 67089			each	6.25
380192		Sealring for speedometer gear			each	17.03
663151		Bush on linkage for auto column change	4/bil	M40/BW35	each	8.34
380360		Reverse light contact		M40/M41	each	29.19

Overdrive parts						
380617		Solenoid overdrive	12V	D-type	each	356.14
181063	N	Ball bearing rear overdrive		D-type	each	95.20
380295	R	Seal ring gearbox rear axle		D-type	each	23.97
380684	R	Seal ring gearbox overdrive	69-74	J-type	each	25.36
380100	R	Gasket kit OD.D-type with O-rings & 380295	B18	D-type	each	105.63
380101	R	Gasket kit OD.D-type with O-rings & 380684	B20	J-Type	each	105.63
274043D		Wheel kit	B18	D-type	each	378.03
274043		Wheel kit	B20	J-Type	each	378.03
380356	N	Gasket right side overdrive		D-type	each	12.51
380441	N	Plastic washer kit,magnetic	latermod	D-type	each	46.91
380280	N	Gasket between oilseal and 380441		D-type	each	8.69
380311		Bushing for gearbox shaft		M41	each	10.08
662292		Inhibitor switch on gearbox lid			each	62.54
11996		Copper washer for 662292			each	3.13
273060	RS	Gear box mount		M30/M40	each	32.31
662711	RS	Gear box mount		M40	each	32.66
1221967	RS	Gear box mount		M41	each	32.66
656019/20	N	Rubber bushing for gear level lower/upper	M30	M40/M41	each	10.42
192125		Circlip gear level	M30	M40/M41	each	6.25
380198		Ball socket gear level	M30	M40/M41	each	7.30

INSTRUMENT, SPEEDO CABLES/GEAR BOX						
660874	R	Spedometer cable	H6	B16	each	111.19
660840	R	Spedometer cable	M4-4 speed	B16	each	100.07
669020	R	Spedometer cable (w/o overdrive -1963)	M30/M40	B16/18	each	82.69
668598	R	Spedometer cable (with overdrive -1963)	M31/M41	B16/18	each	119.87
663789	N	Drive cable	M31/M41	B16/18	each	50.38
670505	R	Spedometer cable (with overdrive)	1964-	B18	each	80.61
670506	R	Spedometer cable	1964-	B18	each	80.61
654507		Spedometer cable rubber grommet	ch-20999		each	8.69
666622		Clamp choke arm			each	1.74
380164		Speedo meter gear	M30/M40	16 teeth	each	62.54
380753		Speedo meter gear for overdrive J-type	M41	B20	each	244.26
380192		Oil seal,speedo cable inlet in gearbox			each	17.03
673999		Temperature gauge with sender			each	477.40
190851		Connecting nipple for temp.gauge			each	23.97
672910	R	Oil pressure sender			each	23.63
AUTO TRANSMISSION BW 35						
276502		Gasket kit			each	54.90
276501		Rubber/gasket kit			each	327.65
235985		Kick down cable			each	134.12
235859		Oil drain plug			each	5.21
955523		Screw	15/box		each	1.04
235517					each	80.61
235728					each	64.28
235511					each	30.58
235705		Inlet pipe front			each	52.81
273432		Spring kit			each	269.28
273222		Spring kit			each	134.12
235814		Safety net			each	17.37
380164		Spedometer gear			each	62.54
380192		Sealring for spedometer gear			each	17.03
191117		O-ring			each	3.82
381704		Bushing			each	20.15
662711		Gear box mount			each	33.01

PROPELLER SHAFT					
672037	R	Universal joint	3/car	each	30.58
1217606	R	Universal joint, with grease cap	3/car	each	42.04
273202		Bolt kit universal joint	3/car	each	19.80
15260		Locking washer universal joint	6/car	each	5.56
192554	R	Grease nipple for universal joint with grease cap		each	2.78
653192		Rubber bushing propeller shaft	2/car	B16 each	10.77
658653		Rubber bushing propeller shaft	2/car	-1966 each	10.77
675367		Rubber bushing propeller shaft	1/car	1967-70 each	25.36
675587		Rubber bushing propeller shaft & bearing		each	26.75
181252	R	Propeller shaft bearing	1/car	1957-66 each	92.42
181549	R	Propeller shaft bearing	1/car	1967-70 each	39.26
15550		Corkgasket	1/car	each	21.54
10372/73		Workshop propeller shaft	Swe/Eng	each	60.11

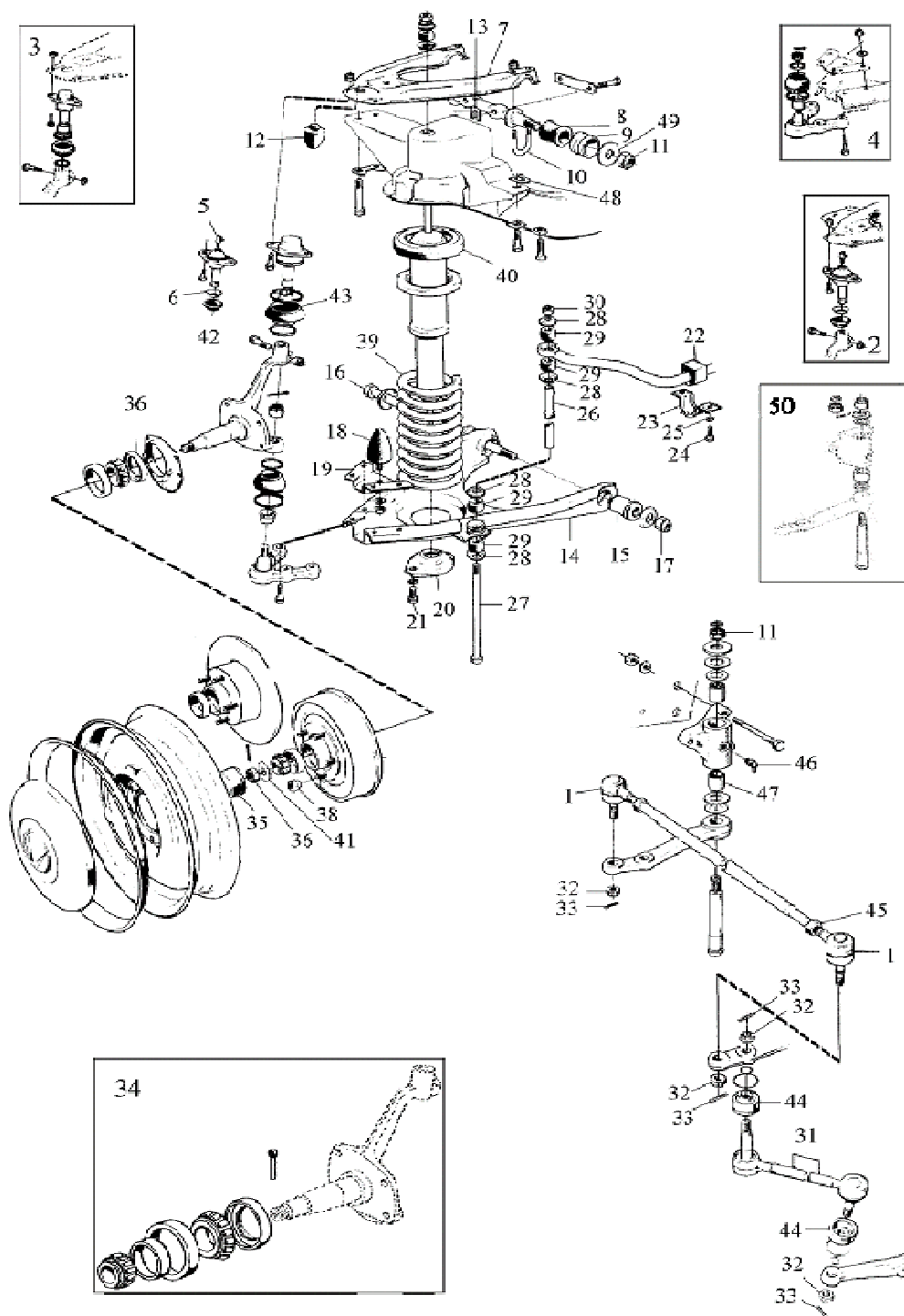


Fig 3: Front Suspension Amazon

FRONT SUSPENSION BUSHINGS

273004	R	3:2	Ball joint upper, repair kit inkl grease nipple	2/car	ch-193799	each	125.43
273004-1	R		Ball joint upper, repair kit	2/car	ch-193799	each	98.33
273030	R	3:3	Ball joint upper, repair kit B20	2/car	ch 193800-	each	77.83
273038	R	3:4	Ball joint lower, repair kit	2/car		each	134.12
190084	N	3:5	Lubricator for ball joint upper	2/car	ch-193799	each	6.95
89369	R	3:42	Rubber protector for ball joint upper		ch-193799	each	7.64
654479	N	3:6	Washer for ball joint upper	2/car	ch-193799	each	5.56
940161			Screw	2/car		each	3.13
950353			Nut for 940161	2/car		each	1.04

671440		3:7	Wishbone upper	2/car	193800-	each	454.47
87033		3:8	Rubber bushing upper inner control arm	8-4/car	alla	each	9.03
653410	RS	3:9	Sleeve upper inner control arm	4/car		each	20.50
653409	RS	3:10	U-Bolt upper inner control arm incl. Nuts	4/car		each	20.50
120802	R		Washer	1/car	1957-70	each	2.78
950366		3:11	Locing nut	4/car	-7999	each	2.08
83107		3:12	Rubber cushion on upper control arm	2/car		each	29.53
654107/06/05		3:13	Adjuster shim upper wishbone	15/0.50/1,00		each	3.82
658769/70	N	3:13	Adjuster shim upper wishbone	ss: 3.00/6,00		each	5.21
671351/52		3:14	Wishbone lower	Left/Right	B18/B20	each	474.28
663675	RS	3:15	Rubber bushing lower inner control arm	4/car	B18/B20	each	31.62
192113		3:16	Bolt for lower inner control arm	2/car	8000-	each	60.80
950357		3:17	Mnut for bolt 192113	2/car	8000-	each	2.78
83108		3:18	Rubber cushion on lower contral arm	2/car		each	45.17
653330	RS	3:19	Console for 83108	2/car		each	40.65
672228		3:20	Lower anchorage for wishbone	2/car	B18/20	each	34.75
955523		3:21	Bolt unc 16mm (for 672228)	4/car		each	1.04
657839	RS	3:22	Rubber bushing anti sway bar	2/car		each	10.77
672217	R	3:23	Clamp for 657839	2/car		each	30.58
940115		3:24	Bolt for 672217	4/car		each	1.39
955950		3:25	Washer for above	4/car		each	0.52
654049	RS	3:26	Spacer tube anti sway bar	2/car	S	each	9.03
106841		3:27	Bolt anti sway bar	2/car	S	each	48.99
83126		3:28	Washer anti say bar	8/car	S	each	3.82
83125	RS	3:29	Bushing anti sway bar	8/car	S	each	3.47
955826	R	3:30	Nut	2/car	S	each	1.39
273239			Mounting kit anti sway bar	2/car		each	75.40
658596/97	R	3:31	Steering rod	LH/RH		each	121.26
190573	N	3:32	Castellated nut for 658431/2 original			each	9.38
907824	RS	3:33	Split pin (stainless)	2X20mm		each	0.43
658431/32	R	3:1	Tie rod ends	LH/RH		each	62.54
660979			Tie rod with ends			each	205.69
661288/89		3:45	Nut for tie rod	LH/RH		each	8.34
89369	R	3:44	Dust cover ball joint/steering rod		B16	each	7.64
670877	N	3:44	Dust cover ball joint/steering rod		B18	each	27.45
663709	RS	3:47	Bushing Idler arm	1962-66	2/car	each	36.14
671444	RS		Bushing Idler arm	1967-70	B18/B20	each	34.40
914170	R	3:46	Lubricator idler arm	1/car		each	4.52
276521	RS	3:50	Idler arm repair kit	1962-66	B18	set	205.69
273160	R	3:34	Front wheel bearing kit	2/car	1957-70	each	137.24
FT200			Bearing grease tube	200g		each	14.59
87465	R	3:35	Grease cap	2/car		each	23.28
87464		3:41	Thrust washer	2/car		each	14.25
88640	R	3:36	Dust seal front wheel	2/car	inner	each	23.63
153042		3:37	Nut for hub	2/bil		each	6.95
87699	R	3:38	Wheel nut	20/car		each	2.78
87699L			Locking wheel nut (set of four + key)	1/car		each	59.07
653184	RS	3:39	Front spring		1957-70	each	157.40
653184-1	RS		Sport spring kit (30 mm lowering)	1/car		set	703.94
653642		3:40	Rubber seal, on spacer washer	2/car		each	41.00

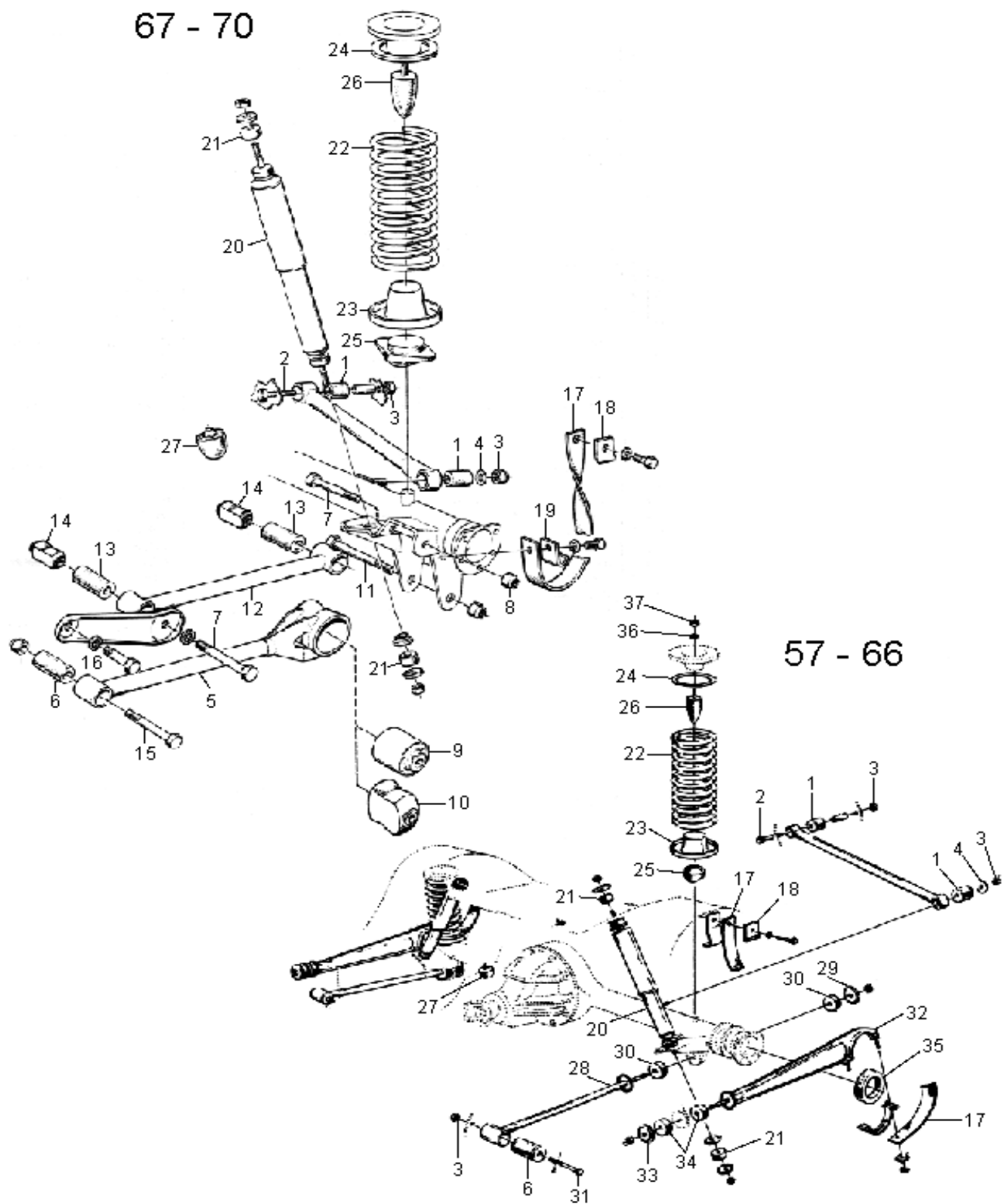


Fig 4: Parts for Rear Axle Mountings

Bushings rear axel 120/130 sedan						
87033		4:1 Bushing anti roll bar	2/car	1957-70	each	8.69
955565		4:2 Bolt for 87033	1/car	1957-70	each	9.03
950366		4:3 Nut for 955565	1/car	1957-70	each	2.08
120802	R	4:4 Washer for 955565	1/car	1957-70	each	2.78
667581		4:28 Torque rod	2/bil	-1966	each	217.85
667535		4:29 Washer for torque rod 667581	2/car	-1966	each	13.55
653168		4:30 Rubber cushion torque arm	4/car	-1966	each	15.64
662797	R	4:6 Rubber bushing front, torque arm	2/car	-1966	each	31.27
955568		4:31 Bolt for bushing 662797	2/car		each	5.56
950366		4:3 Nut for 955568	2/car		each	2.08
653442/43	RS	4:32 Support arm	Left/Right	-1966	each	206.74
653448	RS	4:33 Washer for support arm 653442/3	2/car	-1966	each	10.08
653461		4:34 Rubber cushion support arm	4/car	-1966	each	11.81
653460		4:35 Rubber cushion ENV rear axel	2/car	-1966	each	37.53
663972		4:35 Rubber cushion Spicer rear axel	2/car	-1966	each	37.53
672609	RS	4:5 Torque rod	2/car	67-70	each	370.04
672609-1	RS	4:5 Torque rod w/o bushings	2/car	67-70	each	277.96
662797	R	4:6 Rubber bushing front, torque arm	2/car	67-70	each	31.27
955569		4:7 Bolt for 662797	2/car	67-70	each	5.56
950356		4:8 Nut for 955569	2/car	67-70	each	1.74
675771		4:9 Rubber bushing rear, torque arm, Sport/GT	2/car	67-70	each	157.40
676914	R	4:10 Rubber bushing rear, torque arm, std	2/car	67-70	each	37.53
678887	R	4:10 Rubber bushing rear, torque arm Reforced	2/car	67-70	each	37.53
941858	R	4:11 Bolt & nut for 676914/678887	2/car	67-70	each	14.25
672616		4:12 Support arm	2/car	67-70	each	215.42
672226	R	4:13 Bushing torque rod chassi nbr -280978	4/car	67-70	each	31.27
678790	R	4:14 Bushing torque rod chassi nbr 280979-	4/car	67-70	each	31.27
955569		4:15 Bolt for 672226 & 678790	2/car	67-70	each	5.56
950356		4:8 Nut for 955569	2/car	67-70	each	1.74
940280		4:16 Washer	2/car	16500-	each	1.04
667539		4:17 Damperband	2/car	57-70	each	15.29
89818	R	4:18 Washer damper band stainless steel upper	2/car	57-70	each	13.55
671939	R	4:19 Washer damper band stainless steel lower	2/car	67-70	each	13.55
MSA10	R	Bolt set damper band	1/car	57-70	each	5.56
276479/80	R	4:20 Shock absorber kit (OIL)	Front/Rear	B18	each	112.92
276552/53		4:20 Shock absorber kit (OIL)	Front/Rear	123GT	each	152.19
276552/53G	R	4:20 Shock absorber kit (GAS)	Front/Rear	123GT	each	208.13
46-0283/293		4:20 Shock absorber kit BILSTEIN	Front/Rear	2/4d	each	356.14
46-1412		4:20 Shock absorber kit BILSTEIN		220	each	411.73
670129	RS	4:21 Rubber bushing shock absorber	8/car		each	3.82
672214	RS	4:22 Rear Spring	2/car	1957-70	each	157.40
659154	RS	4:23 Spring seat	2/car	1957-70	each	98.33
659325		4:24 Rubber spacer upper spring seat	2/car	1957-70	each	37.53
667686		4:25 Rubber mount for rear spring seat	2/car	1957-70	each	37.53
83108		4:26 Rubber cushion at spring	2/car	1957-70	each	45.17
955783		4:37 Nut for 83108	2/car	1957-70	each	0.35
955922		4:36 Washer for 83108	2/car	1957-70	each	0.17
83107		4:27 Rubber cushion	1/car	1957-70	each	29.53

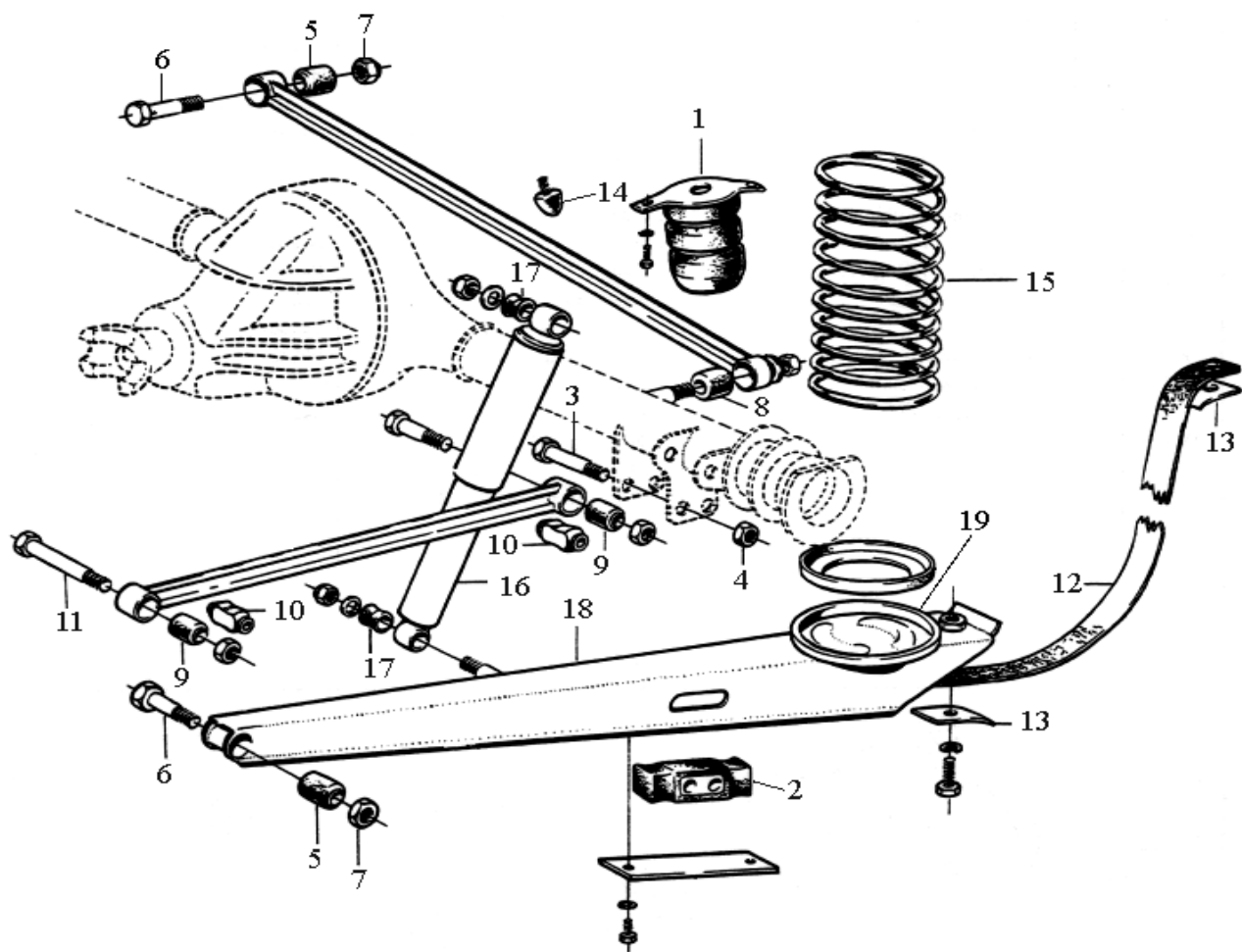


Fig 5: Parts for Rear Axle Mountings Estate

Bushings rear axle - 220 WAGON

666905		5:1	Hollow rubber spring			each	191.10
660112		5:2	Rubber cushion			each	116.40
955587		5:3	Bolt för 660112	2/car		each	14.59
950367		5:4	Nut for 955587	2/car		each	3.13
662797	R	5:5	Rubber bushing support anti roll bar	2/car		each	31.27
955568		5:6	Bolt for 662797 & 672226/678790	2/car		each	5.56
950366		5:7	Nut for 955568			each	2.08
666416	R	5:8	Rubber bushing support anti roll bar upper	1/car		each	66.36
672226	R	5:9	Rubber bushing support arm	4/car	chnr - 63039	each	31.27
678790	R	5:10	Rubber bushing support arm	4/car	chnr 63039-	each	31.27
191812		5:11	Bolt for 672226 & 678790 front torque rod	1/car		each	5.56
660108		5:12	Damper band	2/car		each	15.64
89818	R	5:13	Washer damper band stainless steel	2/car	1957-70	each	13.55
MSA10	R		Bolt set damper band	1/car	1957-70	each	5.56
83107		5:14	Rubber cushion rear axle	1/car		each	29.53
660873	R	5:19	Spring seat rear spring upper/lower	2/car		each	93.12
659423	RS	5:15	Rear Spring	2/car	1962-69	each	169.91
669927	RS	5:15	Rear Spring reinforced	2/car	1962-69	each	189.71
669219	R	5:16	Shock absorber kit	2/car	220	each	112.92
669220		5:17	Rubber bushing shock absorber	4/car	220	each	13.20
660644/45	R	5:18	Support arm	LH/RH	220	each	590.67

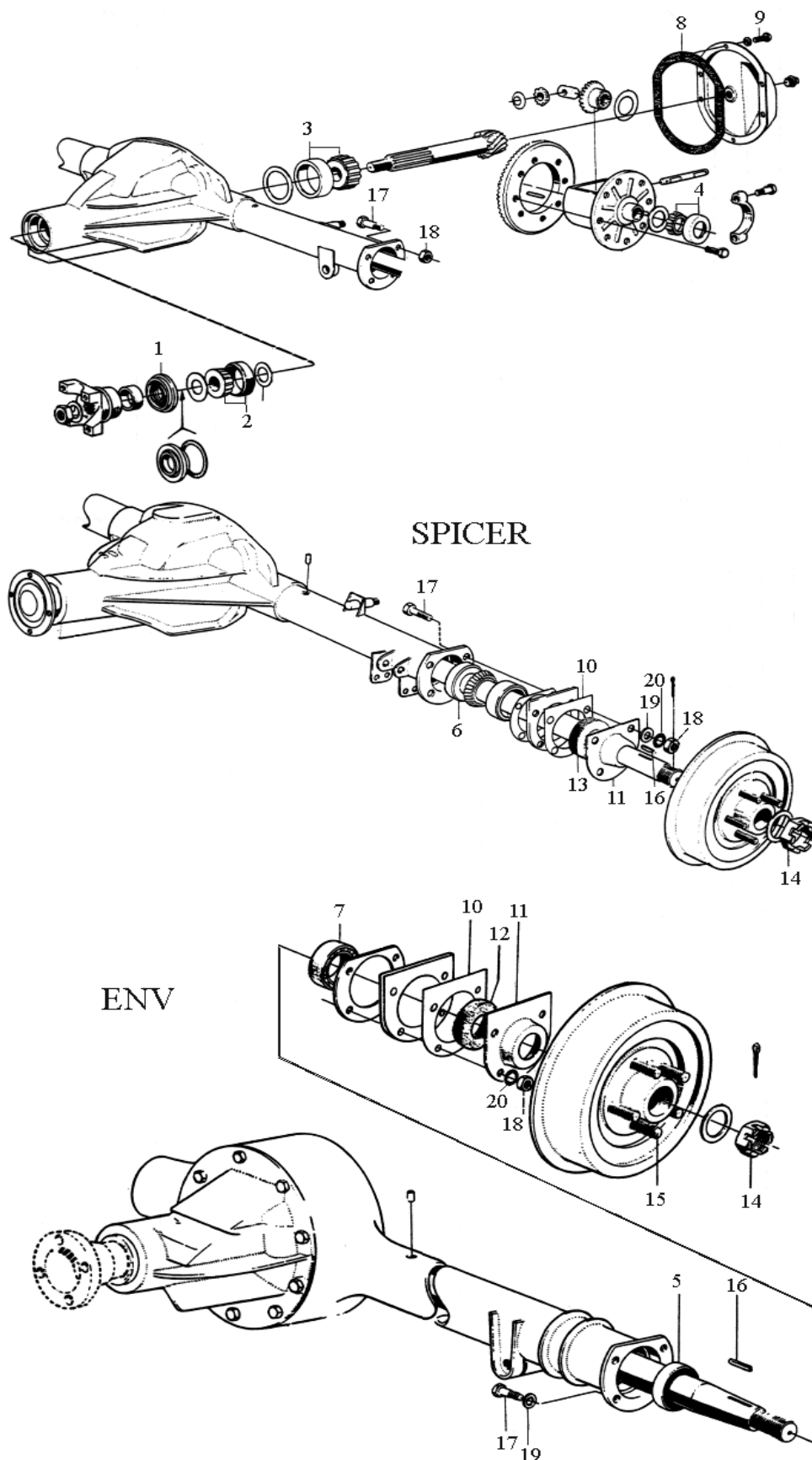


Fig 6: Parts for Rear Axle

Pinion oil seal & bearing Std & 220					
88391		Pinion oil seal	1/car	ENV	each 108.75
88391-1		Pinion oil seal	1/car	ENV	each 53.86
942905	6:1	Pinion oil seal	1/car	Spicer	each 44.82
181302	6:2	Outer/inner cup Pinion		All	each 72.62
181304	6:3	Outer/inner cup Pinion		All	each 67.75
181306	6:4	Outer/unner cup differential	M27		each 135.51
181662	6:4	Outer cup differential	M30	B20	each 72.97
114046	R	6:5 Oil seal rear axle	2/car	ENV	each 32.31
114275	R	6:6 Oil seal rear axle	2/car	Spicer	each 25.02
192550	R	6:6 Oil seal rear axle	2/car	ENV/Spicer	each 23.28
19553	R	Rear axle bearing	2/car		each 82.00
19577	R	6:7 Rear axle bearing	2/car		each 97.63
89691		Inspection cover	1/car	Spicer	each 191.10
87670	RS	Gasket inspection lid rear axle	1/car	ENV	each 25.36
89254	RS	6:8 Gasket inspection lid rear axle	1/car	Spicer	each 17.37
955523		6:9 Bolt for rear lid	10/car	Spicer	each 1.04
1484	R	Rear axle bearing kit	2/car	ENV	set 142.46
1485	R	Rear axle bearing kit	2/car	Spicer	set 213.68
FT200		Bearing grease tube	200g		each 14.59
673788	RS	6:10 Gasket rear axle to brake shield	4/car		each 10.77
657579	RS	6:10 Gasket rear axle to brake shield	4/car	220	each 7.64
673791	RS	6:11 Oil seal metal cap + felt ring 19246	2/car		each 39.26
19246	RS	6:13 Felt ring rear axle	2/car		each 10.77
153031		6:14 Crown nur rear axle	2/car	Spicer	each 23.97
10506		6:14 Crown nut rear axle	2/car	ENV	each 9.03
654490		6:15 Wheel bolt	10/20/car		each 11.47
87699	R	Wheel nut	20/car		each 2.78
160553		6:16 Flat key	2/car		each 22.24
955676		6:17 Bolt to hold all the seals togheter	8/car		each 2.08
955848		6:18 Nut	8/car		each 0.69
940097		6:19 Washer	8/car		each 0.35
955950		6:20 Låsbricka	8/bil		each 0.52
10338		Workshop manual rear axle	Swe		each 60.11

Steering box gaskets/idler arm parts							
114271	RS	Oil seal steering box (lower)	1/car	Also in 54929	each	25.36	
678249	RS	Oil seal steering box (upper)	1/car	Also in 54929	each	25.36	
85627	RS	Brass bushing	2/car	Also in 54929	each	23.28	
656704	RS	Gasket steering box	1/car	Also in 54929	each	4.52	
656707/08/09	RS	Shim	erf	0,1/0,12/0,15	each	8.69	
955921	R	Spring washer	2/car	Also in 54929	each	0.35	
54929	RS	Kit for steering box	1/car		set	87.56	
190060	N	Lock ring side cover		ch-54392	each	1.04	
656716/18	N	Shim/washer Th 2,20/2,30		ch-54392	each	7.30	
659225		Lock ring side cover		ch 54394-	each	1.04	
659220-23	N	Shim/washer Th 2,20/2,40/2,50		ch 54394-	each	10.42	
671430		Locking washer steering nut	1/car	ch 279900-	each	4.17	
654653	RS	Rubber spacer horn ring	1/car		each	12.51	
659365	RS	Rubber spacer steering box	1/car		each	15.64	
654011		Rubber foam collar steering column	1/car		each	9.38	
669870		Hardy disc steering column	B18	-1967	each	44.82	
673060		Bushing steering column	2/car	68-70 B20	each	84.08	
9992263	R	Steering wheel removal tool		-1966	each	92.42	
9992264	R	Steering wheel removal tool		1967-70	each	92.42	
GAS- & CHOKE LINKAGE							
660533	R	Gas pedal rubber	1/car		each	10.77	
660549	N	Pedal plate incl 81803	1/car		each	43.43	
81803	R	Rubbercushion under pedal	1/car		each	2.78	
658660		Gas linkage bushing engine compartment	2mm	B16	each	7.30	
663304		Gas linkage bushing engine compartment	4mm	B16	each	5.56	
666143		Gas linkage bushing engine compartment	2/car	B18/B20	each	9.38	
418963	RS	Return spring gas link		B18B/D/B20B	each	11.81	
959088	R	Ball joint(with ball & locking brace)	RH	B16/B18/B20	each	11.81	
942837	R	Ball joint(with ball & locking brace)	LH	B16/B18/B20	each	12.51	
191203		Control rod		B18B/D	each	23.63	
418449		Intermediary shaft	1961-66	B18B/D	each	120.91	
661963		Shaft	1961-66	B18A	each	71.23	
672221	N	Anchorage for shaft		B18	each	17.37	
419335	N	Anchorage for shaft		B18	each	13.90	
653218	RS	Gas pedal grommet	1/car	B16	each	26.06	
663052		Dust cover	1/car	B18/B20	each	25.36	
55192	RS	Choke wire, single carburetor		B16/B18/B20	each	40.30	
55192-2	RS	Choke wire, double carburetor		B16/B18/B20	each	66.36	
664425		Rubber grommet for choke wire (holds cables together)			each	12.86	
418561		Cable retainer	2/car	B18	each	12.86	
950003		Screw for reatiner	2/car	B18	each	2.08	
666622		Clamp choke arm			each	1.74	
94641		Locking washer			each	2.08	
419452		Clip for cable retainer			each	10.77	
71676	N	Flexible connection		B16B	each	27.80	
106837	N	Screw for 71676		B16B	each	1.04	
71679	N	Wire stirrup		B16	each	13.90	
21882	N	Retainer for choke wire			each	10.42	

Windshield wipers						
673190		Wiper blade			each	49.34
673189	R	Wiper arm			each	56.29
660397	RS	Gasket wiper axle	2/car		each	5.91
190543		Washer between 660397 & 660379	2/car		each	0.35
660379	RS	Rubber gasket wiper axle between 190543 & 190735	2/car		each	3.13
190735		Retainer chrome	2/car		each	11.81
658164		Hub for wiper arm Autolite/SWF	2/car	6mm	each	11.81
671911		Hub for wiper arm Electrolux	2/car	8mm	each	13.90
661906	N	Carbon brush for SWF	2/car		each	15.64
661907	N	Spring for carbon brush SWF	2/car		each	3.82
1698261		Washer nozzle	1/car	1966	each	59.07
672631		Washer nozzle	1/car	1967-	each	28.84
665334	RS	Rubber washer for washer nozzle 672631	2/car	1967-	each	0.69
40136	RS	Rubber grommet	ch-383549	-1965	each	4.52
191472		Hose between washer & elbow & pump threeway union	B16	"Rubber"	meter	7.64
659250		Hose between pump threeway union & washer nozzle	B16	"Rubber"	meter	7.64
192580		Hose between pump threeway union & washer nozzle	B18	"Plastici"	meter	3.82
192581		Hose between washer pump threeway union	B18	"Plastic"	meter	3.82
659248		Threeway union		-1965	each	4.86
190405	N	Clamp for plastic hose		1967-1970	each	3.82
666977		Water reservoir " round type"		1961-1966	each	64.28
663641		Elbow nipple for 666977		1961-1966	each	3.82
667352		Non return valve for 666977		1961-1966	each	10.08
688400		Washer pump		1967-1970	each	230.36
671723		Water reservoir		1967-1970	each	119.87
671723-1		Water reservoir	Reproduction	1967-1970	each	86.86
Hubcaps & Tires						
654108	RS	Hubcap red "V" center		1957-64	each	206.74
190	RS	Decal for hub cap 654108			each	10.77
670427	R	Hubcap black "V" center		1965-70	each	116.40
88754	R	Trim ring	15"	1957-1964	each	125.43
579810	R	Tire BFG Radial 165X15"	4" white wall		each	554.19
579811	R	Tire BFG Radial 165X15"	4" white wall		each	634.10
277517	RS	Wheel paint silver	"Nyhet"	1965-74	each	171.99
WINDOW GLASS						
656843	RS	Front windshield	clear glss		each	437.10
671889	RS	Front windshield	green tint		each	429.45
661984	RS	Reae screen heated	green tint	AZ combi	each	604.22
653780		Ventilation window with chrome rhs	clear glss		each	152.88
657475		Ventilation window without chrome	clear glss		each	55.59
657476		Doorglass	clear glss	120/220	each	107.36
655179		Doorglass	clear glss	130	each	151.14

Call for details on windshield shipping.

Bumpers & chrome parts							
673690/91		Front bumper corner section		LH/RH	each	447.52	
653294	RS	Front bumper middle section			each	693.17	
653606/07	RS	Front bumper overrider		LH/RH	each	277.27	
657133/13319	RS	Rubber seal inside of overrider			m	10.77	
673694/95		Rear bumper corner section		LH/RH	each	447.52	
653305		Rear bumper middle section			each	590.67	
657053	RS	Rear bumper overrider 120/130	2/car		each	277.27	
666265	RS	Bumper horn Az combi rear	2/car		each	277.27	
666262	RS	Rubber pad rear overrider 220	2/car	ORIGINAL	each	18.76	
671246	RS	Rubber guard for overrider	4/car	front/rear	each	38.22	
276422	RS	Mounting kit bumper, half kit with washer	4/car	front/rear	each	41.35	
MS A12	RS	Mounting kit bumper, half kit no washer	4/car	front/rear	each	25.36	
653572	RS	Washer for bumper to support arm	8/car		each	9.38	
190373	RS	Bumper bolt chromed	8/car		each	12.16	
955827	RS	Nut for 190373 UNC	8/car		each	1.39	
950354		Nut with locking for bolt 190373	8/car		each	1.74	
661050	RS	Hood/bonnet trim (polished stainless steel)		1957-68	each	187.97	
668971	R	Trunk/boot lid handle, chromed		1964-70	each	387.06	

EXHAUST SYSTEMS (INCL INSTALLATION KITS)						
CV3K	RS	Exhaust system (Please state chassis number)	120/130	B16 1957-61	set	617.43
CV3K1	RS	Exhaust system	120/130	1962-66	set	617.43
CV3K2	RS	Exhaust system	120/130	1967-70	set	681.36
CV3K3	RS	Exhaust system	220	1962-66	set	642.44
CV3K4	RS	Exhaust system	220	1967-70	set	642.44
025K	RS	Exhaust system	SPORT	2"	set	634.10
025K1	RS	Exhaust system (Single pipe)	SPORT	2"	set	642.79
037E	RS	Exhaust 2" (4 to 1 header)	SPORT	1967-70	set	682.05
037AD	RS	Adapter for 037E	SPORT	1967-70	each	71.58
418405	N	Exhaust manifold, early models	B18 Sport		each	484.70
418545	N	Exhaust manifold	-1965	B18	each	366.91
CV3K1-1	RS	Exhaust system (excl inst. Kit)	120/130	1962-66	set	356.14
CV3K2-1	RS	Exhaust system (excl inst. Kit)	120/130	1967-70	set	411.73
CV3K3-1	RS	Exhaust system (excl inst. Kit)	220	1962-66	set	461.77
CV3K4-1	RS	Exhaust system (excl inst. Kit)	220	1967-70	set	497.55
273784		Mounting 1/2-kit Az exhaust original w mounting kit			set	304.02
657784		Clamp for downpipe	early B16		st	5.21
663794		Bracket front exhaust pipe		1961-66	each	33.01
192040		Clamp for bracket 663794			each	10.42
666208		Tailpipe rubber cushion	black	1961-62	st	13.90
658201		Tailpipe rubber cushion	grey	1961-62	st	15.98
666133		Clamp for 666208		1961-62	each	14.25
667503		Tailpipe suspension rubber		1962-70	each	10.08
666407		Rubber ring for silencer		1961-70	each	12.86
273103		Mounting kit for rear exhaust system	Ch 89777-	1962-70	each	28.14

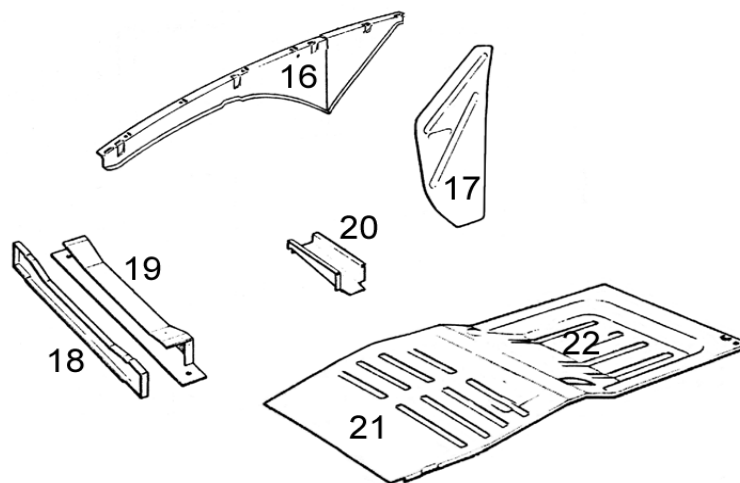
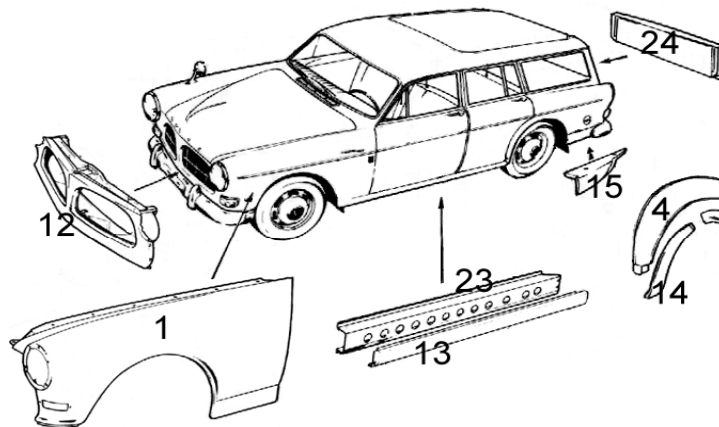
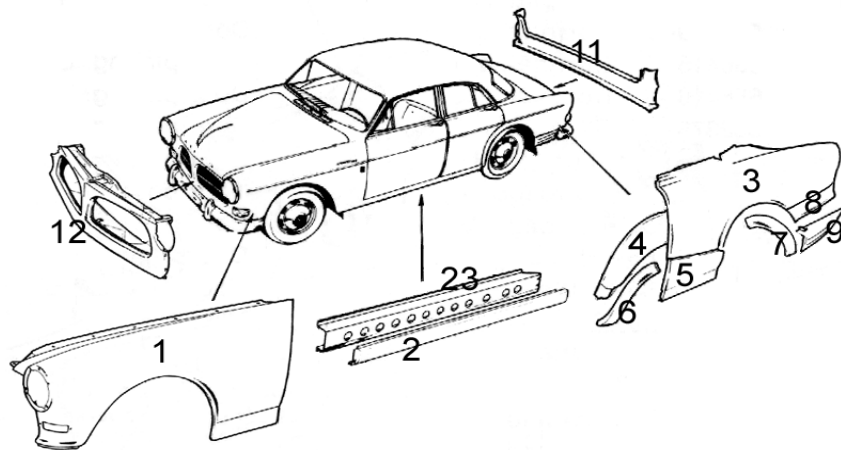


Fig 7: Sheet Metal Parts and Fenders Amazon

Sheet metal panels and fenders							
661924/25		7:1	Front fender	LH/RH		each	1600.72
276465	RS		Mounting kit front fender (incl. rubber seal)	2/car		each	52.47
661987	RS		Rubber moulding at wing-B-post	2/car		each	24.67
255	RS		Sealer front wing	2/car		each	13.90
HG25301	RS		Sealer front wing			each	31.27
235			Front wheel arch liner, aluminum			pair	472.54
661878	N		Joint section rear wing, LH	RH		each	31.27
663946		7:12	Front section			each	1661.88
MSA8	RS		Mounting kit front section		-1964	each	59.07
273137	RS		Mounting kit front section		1965-	each	51.08
653015		7:11	Outer panel below trunk			each	469.06
662645			Metal moulding for door rubber seal			meter	18.07
653687	RS	7:20	Cross member front floor	1.5mm metal		each	78.87
654067		7:19	Cross member front			each	158.79
653309		7:18	Cover for cross member front			each	134.12
658860/61P	RS	7:21	Front floor section left or right, pressed	LH/RH		each	170.95
658862/63	RS	7:22	Rear floor section (flat section w.reinforcement)	LH/RH		each	104.93
658862/63P	RS	7:22	Rear floor section pressed section	LH/RH		each	450.30
001	RS		Sound deadning sheet			m2	51.77
657633/34	RS	7:9	Lower section rear fender/wing sedan (L/R)	LH/RH		each	202.22
662549/50		7:15	Lower section rear fender L/R 220	LH/RH		each	291.86
228/229	RS	7:8	Repair panel rear wing, rear	LH/RH		each	125.43
660792	RS		Sheet on rear boot lid	220		each	119.87
657528	RS		Side section spare wheel container			each	136.90
653618	R		Bracket spare wheel container			each	281.09
653270		7:4	Wheel housing outer	RH		each	553.15
615006/07	RS	7:16	Front wing reinforcement member	LH/RH		each	164.69
615006/07-1	RS		120 wing support upper	LH/RH		each	59.07
615006/07-2	RS		120 wing support box LH	LH/RH		each	59.07
654112/13			Reinforcement plate Az wing	LH/RH		each	115.35
653418/19	RS	7:17	Cowl side repair panel (LH/RH)	LH/RH		each	89.99
902016-1/16-2			Door bottom repair panel	LH/RH	4D	each	89.64
657049		7:2	Rocker panel 2-door	RH		each	112.92
902006/07	R	7:23	Rocker panel "inner sill"	LH/RH		each	232.79
672073/74	RS	7:5	Side panel front of rear wheel 2-door	LH/RH		each	79.91
653136/37	RS	7:6	Rear wheel arch front repair	LH/RH		each	59.07
902059/60	RS	7:7	Rear wheel arch, rear repair	LH/RH		each	67.75
902014-1/14-2	RS		Repair panel lower door front	LH/RH	4D	each	259.55
902015-1/15-2	RS		Repair panel lower door back	LH/RH	4D	each	259.55
005			Chassie black paint, semi-gloss			litre	64.28
008			Clear coat for unpainted chassie parts			litre	53.86
HG11444	RS		Primer rust protect 1-K,		400 ml	each	29.88
14939	R		Screw stainless for sill plates			each	2.08

MUD FLAPS, BRACKETS & MOUNTING KITS							
657490	RS	Front mudflap	LH/RH		pair	75.05	
655469/70	RS	Front bracket stainless steel	LH/RH		pair	49.34	
MSA2	RS	Mounting kit front mudflap and bracket		1/car	set	9.73	
670666/67		Rear mudflap (Volvo logo)	LH/RH	1957-64	each	52.81	
670894/95		Rear mudflap (Volvo logo)	LH/RH	1965-70	each	36.48	
655598/99	RS	Rear mudflap plate	120/130		pair	64.63	
MSA3	RS	Mounting kit rear mudflap and plate		1/car	set	7.64	
663546		Rear mudflap plate	220	LH	each	156.35	
10175/76		Workshop manual body	wedish/ENG		each	60.11	
Additional accessories							
277173	RS	Basket for drive shaft tunnel			each	90.34	
277249	RS	Basket for trunk/boot			each	104.93	
281056	RS	Fog light covers (Blue Volvo logo on white)			pair	71.58	
672618	RS	Fog light, GT, brackets (stainless)	123GT		pair	77.83	
279731	RS	Sparewheel cover with Volvo logo, red, blue or brown			each	104.93	
945/46/47		Workshop protection cover (red/brown)			each	54.90	
419251	RS	Divider engine	B18D		each	59.07	
274013	R	Safety belt	3 point	rear seat	each	305.07	
273341	R	Safety belt	3 point	front seat	each	305.07	
277481	RS	Tow bar	Sedan		each	796.37	
277483	RS	Tow bar	Combi		each	796.37	
667208		Map lamp			each	98.33	
HG1500	RS				each	34.40	
HG1580	RS				each	71.23	
HG1	RS				each	89.99	
LITERATURE							
10054-		Service manuals clutch.body.steering, engine mm	Sw/Eng/Ger.		each	60.11	
10939	RS	Catalogue fast moving parts 1971 (parts reference)			each	26.06	
10935Eng		For models PV/Amazon/140. Many illustrations. Repairbook Haynes	English	1961-70	each	101.46	
10940		CD-Rom Parts Catalogue B16/B18 & B20			each	69.49	

TRIM MOULDINGS						
654299	R	Dashboard	1/car	all	each	129.25
663973	R	Anchorage for trim moulding	6/car	all	each	2.08
657263		Front fender trim	2/car		each	106.32
660090/91		Rear fender trim	LH/RH	2d	each	140.37
657264		Rear fender trim	2/car	4d	each	106.32
662656		Rear fender trim	LH/RH	220	each	121.61
659205		Door	2/car	2d	each	106.32
657265		Front door	2/car	4d	each	106.32
659287/88		Door upper front	LH/RH	2d 1967-	each	145.24
659290/91		Rear side window	LH/RH	2d 1967-	each	145.24
657266		Rear door	2/car	4d	each	106.32
655261		Door panel front	front		each	80.61
655262		Door panel front/rear (inside)	rear		each	70.53
654384/85		Windshield left side	LH/RH	2d&4d	each	215.77
654386		Joint piece windshield chrome trim	2/car	2d&4d	each	25.36
654388/89		Rear window, side	LH/RH		each	66.36
659994/95		Drip rail moulding front	2/car	2d&4d	each	68.45
654297/98		Drip rail moulding rear	2/car	2d&4d	each	116.05
662657	R	Drip rail moulding rear, wagon	2/car	220	each	135.85
657298		Joint piece	2/car	2d&4d	each	26.41
658850	RS	Clips trim	40/car	2d&4d	each	1.56
654585	RS	Clip for trim 654391	4/car		each	5.56
MM4		Nut for 654585	4/car		each	0.17
192458		Mounting clips upper door trim	-1969	26/car	each	2.43
659654	RS	Rivet for clip 192458	-1969	26/car	each	0.52
679885	RS	Mounting clips upper door trim	1969-70	26/car	each	1.04
659996		Mounting clips upper door trim	4 doors	12/car	each	7.30
EMBLEM						
672490	R	123 GT side emblem	2/car		each	96.94
672493	R	123 GT trunk lid emblem	1/car		each	108.41
661054	R	Early style "VOLVO 121" emblem	2/car	-1964	each	128.91
661055	R	Early style "VOLVO 122S" emblem	2/car	-1964	each	128.91
670677	R	122 S fender emblem	2/car	1965-70	each	93.12
670678	R	121 side emblem	2/car	1965-70	each	95.90
663558	R	Overdrive	chnr -84600	-1964	each	95.90
670566	R	Overdrive	chnr 84601-	1965-	each	83.04
82660		Clips for letter set	10/car		each	1.04
667184	R	B18 grille emblem	1/car	1961-64	each	111.19
673702	R	B20 grille emblem	1/car		each	107.36
666444	R	B18 trunk emblem	1/car	1961-64	each	98.68
670900	R	VOLVO emblem circle with arrow for grill 1965-1968	1/car	1965-68	each	98.68
276377	R	V-O-L-V-O hood letters gold with clips	1/car	-1966	each	121.61
276375	R	V-O-L-V-O hood letters silver with clips	1/car	1967-	each	121.61
663060	R	Volvo emblem trunk handle newer model	1/car	1964-	each	62.54

Brake components						
87695	R	Brake hose	rear	1957-68	each	41.69
670201	R	Brake hose	rear	1968-70	each	41.69
653820	R	Brake hose	front	1959-64	each	41.69
671592	R	Brake hose	front	1962-65	each	41.69
671799	R	Brake hose	front	1965-70	each	41.69
80939	R	Locking clips for brake hose	3/car		each	5.91
955858	R	Nut for brake hose	671799	1965-70	each	1.74
955950		Locking washer for brake hose	671799	1965-70	each	0.52
18651		Copper washer for brake hose rear			each	1.39
275800	R	Brake lining kit rear	ch-15239	1957-58	each	151.14
271812	R	Brake shoes front ch 15239-	front	1959-64	set	123.35
271813	R	Brake shoes rear ch 15239-	rear	1959-65	set	103.54
271814	R	Brake shoes rear	rear	1965-70	set	103.54
273171	RS	Mounting kit brake shoes (for cars w/ front drums)	front/rear	1959-64	each	19.80
273171SKB	RS	Mounting kit brake shoes (for cars w/ front rotors)	rear	1962-70	each	19.80
Q503	RS	Mounting kit brake shoes (w/ return springs)	rear	1965-68	each	40.30
Q504	RS	Mounting kit brake shoes (w/ return springs)	rear	1969-70	each	40.30
669916		Guide washer	rear	1958-64	each	9.73
88830		Lock washer/clip for handbrake lever on rear shoe	rear	1958-64	each	6.60
668667		Brake adjuster	rear	2/bil	each	102.50
25290	RS	Brake return spring kit	rear	1959-64	set	46.56
667160	RS	Upper brake return spring	4/axle	1959-64	each	12.16
659668	RS	Lower brake return spring	2/axle	1959-64	each	12.16
659673	R	Wheel cylinder (ch # 15238-)	front	1959-65	each	114.66
87451	R	Wheel cylinder (ch #-15239)	rear	1957-58	each	145.93
659683	R	Wheel cylinder (ch # 15239-78484)	rear	1959-61	each	114.66
667166	R	Wheel cylinder (ch # 78485-)	rear	1962-64	each	111.88
671216	R	Wheel cylinder 1" (220-1968 122S 62-66)	rear	1965-67	each	59.07
670404	R	Wheel cylinder 7/8" (122s 67-68)	rear	1968	each	75.05
673731	R	Wheel cylinder	rear	1969-70	each	75.05
659676		Pushrod on wheelcylinder up to 667166	2/car		each	12.86
K101	R	Repair kit wheel cylinder	front/rear	1957-58	each	28.49
273022	R	Repair kit wheel cylinder	front	1959-65	each	28.49
273023	R	Repair kit wheel cylinder	rear	1959-61	each	45.17
273024	R	Repair kit wheel cylinder	rear	1962-65	each	32.66
276573	R	Repair kit wheel cylinder	rear	1965-67	each	28.84
87462	R	Bleeder valve			each	7.30
656456	R	Rubber bush for air nipple 87462			each	1.74
Calipers & repair kit						
670724/25	R	Brake caliper single circuit	LH/RH	1965-68	each	321.40
668905		Bolt for caliper 670724/25	4/car	1965-68	each	3.82
525	R	Repair kit single-circuit (pistons, bleeder valve & gaskets	2/car		each	166.78
669208/09	N	Bypass for caliper	LH/RH		each	12.51
684432/33	R	Brake caliper dual circuit	LH/RH	1969-70	each	236.27
943506	R	Bolt for caliper 684432/33	4/car	1969-70	each	3.82
526	R	Repair kit double-circuit (pistons, bleeder valve & gasket	2/car	1969-70	each	171.99
STOK		Note : A refundable core charge applies to calipers			each	138.98

276489	R	Gasket kit brake caliper 1 circuit	2/car	1965-68	each	43.43
273071	R	Gasket kit brake caliper 2 circuit	2/car	1969-70	each	43.43
678155	R	Bleeder valve			each	7.99
656456	R	Rubber bush for air nipple 678155			each	1.74
190279		Screw union on caliper 684432/33			each	53.86
270987	N	Brake pads front B18	front	62-68	set	89.64
270987A		Brake pads front B18 (old new unit)	front	62-68	set	60.80
271739	R	Brake pads front B20	front	69-70	set	68.45
272691	R	Mounting kits brake pads	front	62-70	set	12.86
Brake servo						
VH44	R	Brake servo, replacement	"Lockhead"	B18	each	990.25
1387640		Brake servo, replacement for 676256	1969-70	B20	each	1511.43
276556	R	Repair kit vacum servo "Girling"	1962-68	B18	each	264.07
273077	R	Repair kit servo 676256	1969-70	B20	each	94.86
678407		Non return valve	1969-70	B20	each	57.33
Brake drums & rotors						
673797	R	Brake drum	rear	-1970	each	416.95
666525	R	Brake rotor (Including Sport 63½ - 64)	front	1965-70	each	427.72
STTR		Note : Core charge applies			each	95.55

673797-1		Brake drums rear VOLVO ORIGINAL	rear		each	547.24
666525-1		Brake rotor VOLVO ORIGINAL	front		each	604.22
9991791	R	Brake drum puller			each	284.57
654490		Wheel nut for drums			each	11.47
657874	R	Wheel nut for discs	20/car		each	15.98
87699	R	Wheel nut	20/car		each	2.78
670704/05		Front brake backing plate early 1965	LH/RH	1-circuit	each	167.13
668333/34		Front brake backing plate	LH/RH	1-circuit	each	177.90
673773/74		Front brake backing plate	LH/RH	2-circuit	each	178.24
659672	R	Rubber plug brake adjusting hole	set of 4		each	11.81
Master cylinders & repair kits						
662186	R	Master cylinder		1957-68	each	321.40
1212406	R	Master cylinder		1969-70	each	305.76
1212406R		Master cylinder redone		1969-70	each	232.79
STHCYL		Corecharge 1212406R			each	86.86
662144	R	Filler cap for master cylinder 662186		1957-68	each	27.45
276405	R	Repair kit master cylinder (ch # -64859)		1957-61	each	32.31
276461	R	Repair kit master cylinder		1962-68	each	52.12
273226	R	Repair kit master cylinder ATE 2 circuit (for 1212406)		1969-70	each	31.97
190279		Screw union for mastercylinder 662186		1957-68	each	53.86
Parking brake						
658842	R	Hand brake cable	2/car	1959-70	each	47.95
80969		Clamp for hand brake cable to body			each	6.95
950373		Nut for 80969			each	1.04
658843/44	R	Clamp handbrake cable		LH/RH	each	27.45
656785	N	Rubber retainer for hand brake cable	2/car	ch 535-54399	each	13.90
661428		Rubber retainer for hand brake cable	2/car	ch 54400-	each	16.68
656758	N	Locking spring for cable	2/car	ch 535-15238	each	4.17
653608	R	Rubber seal hand brake axle	1/car		each	39.96

656801	N	Anchorage	2/car	535-	each	4.17
190848	N	Rivet for lever	1/car		each	3.13
653465	N	Push rod handbrake lever	1/car	B16/B18	each	15.64
660651		Hand brake lever ring	1/car		each	13.90
191030	R	Stop screw for handbrake lever ring	1/car	insex	each	1.74
672425	R	Brake light contact		B16/B18	each	23.97
679364	R	Brake light contact		B20	each	27.10
87696	R	3-way joint rear axle			each	69.84
653777	N	5-way joint rear axle	1962-68	B18	each	86.86
273090	R	Repair kit red.valve (excl.pistons)		B20	each	69.84
230		Silicone brake fluid			liter	93.12
237		Plastilube grease for brakes	75 ml	All	each	24.67
239		Copper grease	500 gr	All	each	49.34
64947011		Red grease for brake components			each	8.69
BRAKE LININGS (CUPPER)						
654554	RS	Brake pipe LH front (drum)		57-65	each	21.89
654555	RS	Brake pipe RH front (drum)		57-65	each	23.63
654556	RS	Brake pipe front to rear		57-65	each	42.04
654557	RS	Brake pipe LH rear		57-65	each	18.76
654558	RS	Brake pipe RH rear		57-65	each	25.36
672337	RS	Servo to union		62-68	each	20.85
672338	RS	Master brake cylinder to servo		62-68	each	21.89
667734	RS	Master brake cylinder to union		62-68	each	19.46
663732	RS	Front LH - early 1965		62-65	each	23.63
663733	RS	Front RH - early 1965		62-65	each	23.63
670744	RS	Front RH/LH outer - early 1965	2/car	62-65	each	15.29
671810	RS	Front LH - late 1965-68		65-68	each	23.63
671811	RS	Front RH - late 1965-68		65-68	each	25.36
671808	RS	Front RH/LH outer - late 1965-68		65-68	each	19.46
667398	RS	Brake pipe front to rear valve		62-68	each	38.91
672049	RS	Brake pipe rear valve to rear hose		62-68	each	16.68
672051	RS	Brake pipe LH rear		62-68	each	19.46
672052	RS	Brake pipe RH rear		62-68	each	23.97
673824	RS	Master brake cylinder to union	2/car	69-70	each	16.68
673810	RS	Brake lining between unions	2/car	69-70	each	19.46
673814	RS	Brake pipe LH front	2/car	69-70	each	19.46
673815	RS	Brake pipe RH front	1/car	69-70	each	25.36
673817	RS	Brake pipe RH front	1/car	69-70	each	26.06
673818	RS	Front RH/LH outer	2/car	69-70	each	19.46
673819	RS	Front RH/LH outer	2/car	69-70	each	19.46
673812	RS	Brake pipe front to rear valve LH	1/car	69-70	each	43.43
673813	RS	Brake pipe front to rear valve RH	1/car	69-70	each	40.65
673822	RS	Brake pipe LH rear	1/car	69-70	each	21.89
673823	RS	Brake pipe RH rear	1/car	69-70	each	25.36

Brake lines for the European market only. Not sold in the US due to

BRAKE LININGS (CUPPER/NICKEL& BRASS UNION)

654554	RS	Brake pipe LH front (drum)		57-65	each	33.01
654555	RS	Brake pipe RH front (drum)		57-65	each	33.01
654556	RS	Brake pipe front to rear		57-65	each	52.12
654557	RS	Brake pipe LH rear		57-65	each	33.01
654558	RS	Brake pipe RH rear		57-65	each	39.26
672337	RS	Servo to union		62-68	each	31.27
672338	RS	Master brake cylinder to servo		62-68	each	35.79
667734	RS	Master brake cylinder to union		62-68	each	33.36
663732	RS	Front LH - early 1965		62-65	each	37.53
663733	RS	Front RH - early 1965		62-65	each	37.53
670744	RS	Front RH/LH outer - early 1965	2/car	62-65	each	27.80
671810	RS	Front LH - late 1965-68		65-68	each	34.40
671811	RS	Front RH - late 1965-68		65-68	each	38.22
671808	RS	Front RH/LH outer - late 1965-68		65-68	each	31.27
667398	RS	Brake pipe front to rear valve		62-68	each	52.12
672049	RS	Brake pipe rear valve to rear hose		62-68	each	29.88
672051	RS	Brake pipe LH rear		62-68	each	36.48
672052	RS	Brake pipe RH rear		62-68	each	39.96
673824	RS	Master brake cylinder to union	2/car	69-70	each	31.27
673810	RS	Brake lining between unions	2/car	69-70	each	29.88
673814	RS	Brake pipe LH front	2/car	69-70	each	30.58
673815	RS	Brake pipe RH front	1/car	69-70	each	39.96
673817	RS	Brake pipe RH front	1/car	69-70	each	39.96
673818	RS	Front RH/LH outer	2/car	69-70	each	29.53
673819	RS	Front RH/LH outer	2/car	69-70	each	29.53
673812	RS	Brake pipe front to rear valve LH	1/car	69-70	each	57.33
673813	RS	Brake pipe front to rear valve RH	1/car	69-70	each	54.55
673822	RS	Brake pipe LH rear	1/car	69-70	each	35.79
673823	RS	Brake pipe RH rear	1/car	69-70	each	39.96
18335		Clamp "single" for brake line 663467		3/16"	each	5.21
18376		Clamp "double" for brake line/ fuel pipe		5/16"	each	5.21
121572		Clamp "double" for brake line		1/4" resp 3/8"	each	9.38
18355	RS	Brake lining clamp	3/car	57-70	each	8.34
954327		Brake lining screw union (2-circ)	2/car	68-70	each	51.77

HYDRAULIC CLUTCH COMPONENTS						
659699	R	Clutch disc		B16	set	243.22
651961	R	Clutch kit (incl release bearing)		B16	set	536.82
STKO		Refundable core charge applies to 651961			each	138.98
STLA		Refundable core charge applies to 659699			each	90.34
275907	N	Clutch lining kit Borg&Beck	Borg&Beck	B18	each	97.29
418638	N	Clutch kit w/o bearing (3 arm)	Borg&Beck	early B18	each	400.96
419426	N	Clutch kit w/o bearing	Borg&Beck	late B18B	each	447.52
662783	N	Pressure plate	Borg&Beck	early B18	each	182.41
651990	N	Clutch spring	Borg&Beck	early B18	each	15.64
87962	N	Arm	Borg&Beck	early B18	each	13.90
87963	N	Spring	Borg&Beck	early B18	each	10.42
87965	N	Bolt	Borg&Beck	early B18	each	17.37
271263	R	Clutch kit w/o bearing		B18/B20	set	400.96
940135		Screw for mounting of 271263	6/car		each	1.39
181428		Clutch release bearing 32mm	-1966	B16/B18	each	125.43
672122	R	Clutch release bearing 43mm	1967-	B18/B20	each	136.90
380569	R	Clutch release bearing 36,5mm		B18/B20	each	71.23
666176	RS	Rubber pad clutch pedal	2/bil		each	14.25
663994		Rubber protector clutch fork B18	1/car	B18	each	50.03
677465		Rubber protector clutch fork B20	1/car	B20	each	31.62
1212189		Clutch fork	1/car	B20	each	89.64
684770	R	Clutch cable	B20	1968-71	each	75.05
677056		Rubber grommet for clutch cable			each	18.07
653941		Return spring withdrawal fork & control cylinder	Ch 9442-	B16/B18	each	15.98
677531		Return spring clutch pedal	1/car	B20	each	27.80
653094	R	Clutch main cylinder		1957-68	each	205.69
656479		Filler cap (aluminium)		1957-68	each	39.96
18651		Copper washer for clutch main cylinder			each	1.39
190784	N	Screw union between main cylinder & pressure line			each	12.16
940135		Screw for main cylinder	2/car		each	1.39
672917	N	Yoke to clutch main cylinder			each	22.58
654493	N	Clutch hose (not chnr 2095-2097)	Ch-2176	3/16" line	each	86.86
656877		Clutch hose (+ chnr 2095-2097)	ch 2177-	57-68	each	62.54
80939	R	Locking clips for clutch hose	1/car		each	5.91
667079		Pipe between clutch hose & 653094		B16/B18	each	102.50
669782		Clutch slave cylinder	3/4"	-1966	each	378.03
673030		Clutch slave cylinder	13/16"	1967-68	each	366.91
673030-1	R	Clutch slave cylinder	Reproduction	1967-68	each	239.74
276513	R	Repair kit main operating clutch cylinder		57-68	set	36.83
276451	R	Repair kit slave cylinder clutch	3/4"	57-66	set	22.24
276572	R	Repair kit slave cylinder clutch	13/16"	67-68	set	27.10
653093	N	Push rod	1/car	B16	each	59.07
673032		Push rod including 673034 & 673035	1/car	B18	each	56.64
659048		Bushing on clutch pedal	2/car	B16/B18	each	6.95
653925	N	Return spring clutch pedal	1/car	B16	each	8.69
661791	N	Spring on withdrawal fork	1/car	B16	each	8.69
14503	N	Cotter pin bolt on withdrawal fork	-9441	B16	each	5.21
10054/55		Workshop manual clutch	Swe/Eng		each	60.11

MOUNTING KITS							
MS A1	RS	Screw kit kick panel	1/car			kit	0.35
MS A2	RS	Screw kit front mud flap and bracket	1/car			kit	9.73
MS A3	RS	Screw kit rear mud flap and bracket	1/car			kit	7.64
MS A5	RS	Screw kit radiator grille	1/car	65-66		kit	7.99
MS A6	RS	Screw kit radiator grille	1/car	67-70		kit	7.99
MS A7	RS	Screw tailgate handle 220	1/car			each	0.35
MS A10	RS	Screw kit damper band	1/car			kit	5.56
MS A11B	RS	Mounting kit front wing w/o rubber seal	2/car			kit	29.19
MS A12	RS	Mounting kit bumper excl. Washer	4/car			kit	25.36
MS A13	RS	Screws for headlining retainer	1/car			kit	12.51
MS A14	RS	Screw kit fuel tank	1/car			kit	4.86
MSA16	RS	Screw kit headlamp bowl to wing	1/car			kit	7.30
MSA17	RS	Screw kit for indicator rim incl speed nut	1/car			kit	3.13
MSA18	RS	Screw kit for rear reflector	1/car			kit	1.04
msa19	RS	Screw kit for consol 663852	1/car			kit	15.98
MSA21	RS	Screw kit for upper moulding (windscreen)	1/car	chromed		st	18.07
MSA21B	RS	Screw kit for upper moulding (windscreen)	1/car	Black		st	18.07
MS27	RS	Screw kit for inner rim to inner bowl	1/car			kit	2.08
MS28	RS	Skrew kit for foot dipper switch	1/car			kit	9.03
MS29	RS	Screw kit for air filter 73606	1/car			kit	10.08
MS30	RS	Screw kit for sunviser bracket	1/car	chromed		each	4.17

DECALS					
105	RS	B16 Valve cover decal		each	12.51
106	RS	B18 Radiator decal		each	6.95
107	RS	B14/16 Bosch 6 Volt coil decal		each	6.95
108	RS	B18 Bosch 12 Volt coil decal		each	6.95
109	RS	B14/B16 Sport air filter decal		each	8.69
110	RS	B18 Sport air filter decal		each	8.69
111	RS	Servicedecal Mobil		each	12.51
112	RS	Servicedecal for oilfilter		each	12.51
114	RS	Volvo original car radiolock (Sw.text)		each	12.51
115	RS	Volvo original theft protection (LH vent window)	1966	each	12.51
116	RS	This Volvo equipped with theft protection (SW.text)		each	12.51
118	RS	Volvo rally "European champion 1963-64"		each	12.51
119	RS	Blue Volvo w.checked flag, 544 export		each	12.51
120	RS	Volvo rally "European champion 1963-64"(Sw.text)		each	12.51
121	RS	Heater regulator decal, Sw. Text		each	15.98
122	RS	Heater regulator decal, English. Text		each	15.98
125	RS	Reflex "Volvo" door edge		each	9.38
126	RS	"Volvo" emblem decal red/silver		each	12.51
127	RS	Fill up cooling system, expansion tank	67-70	each	12.51
128	RS	Volvo frost liquid filled B4B, B16, B18		each	12.51
129	RS	"Tudor safety Sweden" Battery decal		each	12.51
130	RS	Brrrrr... Volvo air conditioning decal		each	12.51
131	RS	Endast Volvo har 5-årig PV-garanti (Sw.text)		each	12.51
132	RS	B20 valve cover decal, check belt tension		each	12.51
135	RS	Cooling system instruction, blue/white text		each	12.51
140	RS	Trico washer reservoir decal		each	12.51
142/145	RS	Racedecal checkered flag "Volvo" Red or blue		each	12.51
144	RS	Alternator decal		each	12.51
149	RS	"Amazon - den skiljer er ..." (Sw.text)		each	17.37
150	RS	"En ny Volvo med PV-garanti" (Sw.text)		each	25.71
151	RS	"A product of superb Swedish engineering"		each	25.71
154	RS	This car equipped with alternator, red/white		each	17.37
155	RS	"H" Right hand traffic decal		each	12.51
157	RS	"Volvogirl" Bella,		each	12.51
158	RS	Differential gear, antispinn		each	12.51
159	RS	6V relay decal		each	12.51
164	RS	Running in recommendation		each	12.51
166	RS	Champion spark plugs		each	12.51
168	RS	Volvo safety belt decal		each	12.51
172	RS	"Jag går hellre än kör japanskt" (Sw.text)		each	12.51
173	RS	Decal charging relay 12 Volt		each	6.95
175	RS	Volvo high mileage club		each	12.51
177	RS	"Do not open - see instructionbook" radiator		each	12.51
179	RS	Bosch 12 volt ignition coil B18, white		each	6.95
180	RS	B14/B16 charging relay 6 Volt (larger style)		each	8.69
181	RS	B14/B16 charging relay 6 Volt (smaller style)		each	6.95
186/187	RS	B18B/D air cleaner decal (672280/672281)	67-70	each	8.69
182	RS	Decal kit B16B (57-61) # 107, 2x109, 128, 181	57-61	sats	33.01
183	RS	Decal kit B16A (57-61) # 105, 107, 128, 180	57-61	sats	26.75
184	RS	Decal kit B18B/D # 106, 108, 2x110, 173	62-66	sats	30.58
185	RS	Decal kit B18B/D # 106, 186/187, 173, 179	67-70	sats	30.58
667698	RS	Instruction sheet	6V/12V	each	8.69
		Postcard different volvo motives		each	1.74